



2024-2025 ALABAMA WATERFOWL HUNTING GUIDE

The Alabama Wildlife and Freshwater Fisheries Division (WFF) is dedicated to improving waterfowl habitat and hunting opportunities on public and private lands throughout Alabama. WFF biologists strive to provide quality waterfowl hunting opportunities on our waterfowl management areas and science-based technical assistance to interested landowners and other entities regarding many aspects of waterfowl management. Waterfowl stewardship activities of WFF biologists also include conducting annual aerial waterfowl surveys, wood duck banding, and serving on Waterfowl Flyway and other national committees to represent the interests of Alabama waterfowl hunters.

WATERFOWL SEASONS & BAG LIMITS
DUCK, COOT AND MERGANSER
November 29 - December 1
December 6 - January 31
GEESE
September 7 - October 6
October 19 - November 2
November 29 - December 1
December 6 - January 31
SPECIAL TEAL SEASON
September 14 - September 29

SPECIAL TEAL

6 a day, shooting hours: One-half hour before sunrise to sunset

DUCKS

6 ducks a day, may include no more than 4 mallards (no more than 2 of which can be female), 3 wood ducks, 1 mottled duck, 2 black ducks, 2 redhead, 1 pintail, 2 canvasback and 1 scaup.

DARK GEESE

(Canada, white-fronted, Brant) - The aggregate bag limit shall be 5 a day.

LIGHT GEESE

(snow, blue, Ross's) - The aggregate bag limit shall be 5 a day.

MERGANSERS

5 a day, only 2 may be a Hooded Merganser

COOT

15 a day

Scan the QR Code to learn more information about Alabama's Waterfowl season and bag limits



NOTICE: The material in this document is only a summary of Alabama Laws and Regulations relating to the hunting of Migratory Waterfowl. All land in Alabama is posted by law – Hunting is by landowner permission only. Landowner or agent may impose further restrictions.

SPECIAL YOUTH, VETERAN & ACTIVE MILITARY PERSONNEL WATERFOWL HUNTING DAYS

Nov. 23, 2024 & Feb. 8, 2025. The regular waterfowl season shooting hours, bag limits, and legal arms and ammunitions apply to the special days. Individuals must follow the listed rules to participate in the scheduled special waterfowl hunts:

1. Up to two (2) youth participants must be accompanied by an adult supervisor. The adult supervisor is to remain within arm's length of the youth at all times.
2. Youth is defined as those individuals who have not reached their sixteenth birthday.
3. Adult is defined as those individuals twenty-one years old or older or the parent of the youth who are in possession of all valid state hunting licenses and state and federal waterfowl stamps that are required to hunt waterfowl. Possession of the mandatory hunting licenses and stamps is required.
4. Only one firearm will be allowed per youth. Only the youth hunters will be permitted to utilize the firearm for hunting. The adult is expected to review with each youth the rules of firearm safety and hunter ethics and to ensure they are followed.
5. Veterans and Active Military Personnel must have in possession a valid proof of service (Military, VA, or Veteran ID Card, or a copy of Certificate of Release or Discharge from Active Duty Form (DD214)). Possession of the mandatory hunting licenses and stamps is required.

LEGAL ARMS AND AMMUNITION FOR HUNTING

Long Bows, Compound Bows, or Crossbows. Shotguns of 10 gauge or smaller plugged with one-piece filler, incapable of removal without disassembling the gun, so its total capacity does not exceed three shells and using T size steel shot or smaller or with other U.S. Fish and Wildlife Service approved shot and sizes.

THE POSSESSION OF LEAD SHOT WHILE HUNTING WATERFOWL IS ILLEGAL.

HUNTING LICENSES

RESIDENT

Annual All Game	\$33.55
Small Game	\$22.20

NON-RESIDENT

Annual All Game	\$389.40
10-day Trip All Game	\$240.40
3-day Trip All Game	\$164.30
Small Game	\$127.00
10-day Trip Small Game	\$77.35
3-day Trip Small Game	\$56.00
Federal Duck Stamp	\$30.00
State Duck Stamp	\$12.10
WMA License	\$22.20
H.I.P.	FREE

HARVEST INFORMATION PROGRAM

All licensed waterfowl hunters are required to complete a Harvest Information Program (HIP) survey and will be provided proof of certification with your license. The certification is free but must be available for inspection while hunting.

REPORT BANDS

To properly manage migratory birds, biologists must know migration patterns, harvest and survival rates, and ecological processes. Reporting banded bird recoveries will help provide the needed information. All band reports are very important. Visit www.reportband.gov to report a recovery. Your help will greatly benefit waterfowl.

HUNTING TIMES FOR DUCK, COOT, MERGANSER AND GOOSE

Mobile-Tensaw Delta Waterfowl Management

Zone: The following description defines the boundaries of the Mobile-Tensaw Delta Waterfowl Management Zone. Beginning at the intersection of Highway 90 and the west bank of the Mobile River, east along Highway 90 to the intersection with Interstate 10 at Chacaloochee Bay, east along Interstate 10 to the intersection with Highway 98, northwardly along Highway 98 to the intersection of Highway 90, northwardly along Highway 90 to the intersection with Alabama Highway 225, north along Alabama Highway 225 to the intersection with the railroad that crosses Alabama Highway 225 at

the approximate latitude of 30.857136, west along the railroad to the intersection of the west bank of the Mobile River, and south along the west bank of the Mobile River to Highway 90. The Mobile-Tensaw Delta Waterfowl Management Zone excludes the Apalachee Refuge where no hunting is allowed (see below).

Big Bateau Bay & Bay Grass: The area of the Mobile-Tensaw Delta known as Big Bateau Bay and Bay Grass shall be closed to the operation of all gas-powered motors from the second Saturday in November through the second Saturday in February.

- **Monday and Tuesday:** Closed to Waterfowl Hunting
- **Wednesday through Sunday:** Shooting hours shall be one-half hour before sunrise to 1:00 P.M.
- (For special early teal and goose seasons, shooting days and hours shall be Monday – Sunday, 30 minutes before sunrise to sunset.)

Apalachee Refuge “NO HUNTING”: The following description defines the boundaries of the Apalachee Refuge. Beginning at the intersection of Interstate 10 and Highway 90 at Chacaloochee Bay, east along Interstate 10 to the western channel of the Apalachee River as marked by boundary signs, north to the intersection of Highway 90, west along Highway 90 to the intersection of Interstate 10. The Apalachee Refuge is closed to hunting and the operation of all gas-powered motors from the second Saturday in November through the second Saturday in February.

Notice: Corps. of Engineers lands and waters in Pickens, Greene, and Sumter: shooting hours as stated on ACOE permits.

Remainder of the State: Shooting hours shall be from one-half hour before sunrise to sunset each day.

State laws and regulations that are the same as Federal rules shown are NOT relisted.

SUMMARY OF FEDERAL REGULATIONS RELATING TO THE TAKING OF MIGRATORY BIRDS

In addition to State regulations, the following Federal rules apply to the taking, possession, shipping, transporting, and storing of migratory game birds.

Notice: The material below is only a summary. Each hunter should also consult the actual Code of Federal Regulations (CFR Title 50), which may be accessed at: www.ecfr.gov

A reader-friendly overview of waterfowl hunting and baiting is available at: <https://www.fws.gov/sites/default/files/documents/OLE%20Hunting%20-%20Waterfowl%20Hunting%20and%20Baiting.pdf>

Shooting or Hawking Hours: No person shall take migratory game birds except during the dates and hours open to shooting or hawking as prescribed.

Daily Bag Limit: The number of birds of each species that any person may take or possess in the field during any one day.

Possession Limit: The possession limit is three times the daily bag limit for all waterfowl species. The possession limit is the number of birds that any person may possess in total at home or in storage.

Wanton Waste: All migratory game birds killed or crippled shall be retrieved, if possible, and retained in the custody of the hunter in the field.

Tagging: No person shall give, put or leave any migratory game birds at any place or in the custody of another person unless the birds are tagged by the hunter with the following information:

1. The hunter's signature.
2. The hunter's address.
3. The total number of birds involved, by species.
4. The dates such birds were killed.

No person or business shall receive or have in custody any migratory game birds belonging to another person unless such birds are properly tagged.

Possession of Live Birds: Wounded birds reduced to possession shall be immediately killed and included in the daily bag limit.

Dressing: No person shall completely field dress any migratory game bird (except doves and band-tailed pigeons) and then transport the birds from the field. The head or one fully feathered wing must remain attached to all such birds while being transported from the field to one's home or to a commercial preservation facility.

Shipment: No person shall ship migratory game birds unless the package is marked on the outside with: (a) the name and address of the person sending the birds, (b) the name and address of the person to whom the birds are being sent, and (c) the number of birds, by species, contained in the package.

Harvest Information Program: All licensed waterfowl hunters are required to complete a Harvest Information Program (HIP) survey and will be provided proof of certification with your license. The certification is free but must be available for inspection while hunting.

Importation: For information regarding the importation of migratory birds killed in another country, hunters should consult 50 CFR 20.61 through 20.66. One fully feathered wing must remain attached to all migratory game birds being transported between a port of entry and one's home or to a migratory bird preservation facility. No person shall import migratory game birds killed in any foreign country, except Canada, unless such birds are dressed (except as required above), drawn, and the head and feet are removed. No person shall import migratory game birds belonging to another person.

Migratory Bird Hunting and Conservation Stamp:

The law requires that each waterfowl hunter 16 years of age and over must carry on his person a valid Federal Migratory Bird Hunting and Conservation Stamp, or duck stamp, signed in ink across the face.

Dual Violation: Violation of State migratory bird regulations is also a violation of Federal regulations.

CAUTION: More restrictive regulations may apply to National Wildlife Refuges open to public hunting. For additional information on Federal regulations, contact Senior Resident Agent, U.S. Fish and Wildlife Service, Division of Law Enforcement, 1208 E Main St, Daphne, AL 36526. Telephone: (251) 441-5787. Government entities who would like to discuss potential boating access projects, partnerships, or eligibility requirements regarding Alabama's Boating Access Program should call the WFF Fisheries Section at (334) 242-3471.

RESTRICTIONS: (NO PERSON SHALL TAKE MIGRATORY GAME BIRDS)

- With a trap, snare, net, rifle, pistol, swivel gun, shotgun larger than 10-gauge, punt gun, battery gun, machine gun, fishhook, poison, drug, explosive, or stupefying substance.
- With a shotgun capable of holding more than three shells, unless it is plugged with a one-piece filler which is incapable of removal without disassembling the gun.

- From a sink box (a low floating device, having a depression affording the hunter a means of concealment beneath the surface of the water).
- From or with the aid or use of a car or other motor-driven land conveyance, or any aircraft, except that paraplegics and single or double amputees of the legs may take from any stationary motor vehicle or stationary motor-driven land conveyance. "Paraplegic" means an individual afflicted with paralysis of the lower half of the body with involvement of both legs, usually due to disease or injury to the spinal cord.
- From or by means of any motorboat or sailboat unless the motor has been completely shut off and/or the sail furled, and its progress therefrom has ceased.
- By the use or aid of live decoys. All live, tame or captive ducks and geese shall be removed for a period of 10 consecutive days prior to hunting, and confined within an enclosure which substantially reduces the audibility of their calls and totally conceals such tame birds from the sight of migratory waterfowl.
- Using records or tapes of migratory bird calls or sounds, or electrically amplified limitations of bird calls.
- By driving, rallying, or chasing birds with any motorized conveyance or any sailboat to put them in the range of the hunters.
- By the aid of baiting (placing feed such as corn, wheat, salt, or other feed to constitute a lure or enticement) or on or over any baited area. Hunters should be aware that a baited area is considered to be baited for 10 days after the removal of the bait, and it is not necessary for the hunter to know an area is baited to be in violation.

ALABAMA DIVISION OF WILDLIFE AND FRESHWATER FISHERIES

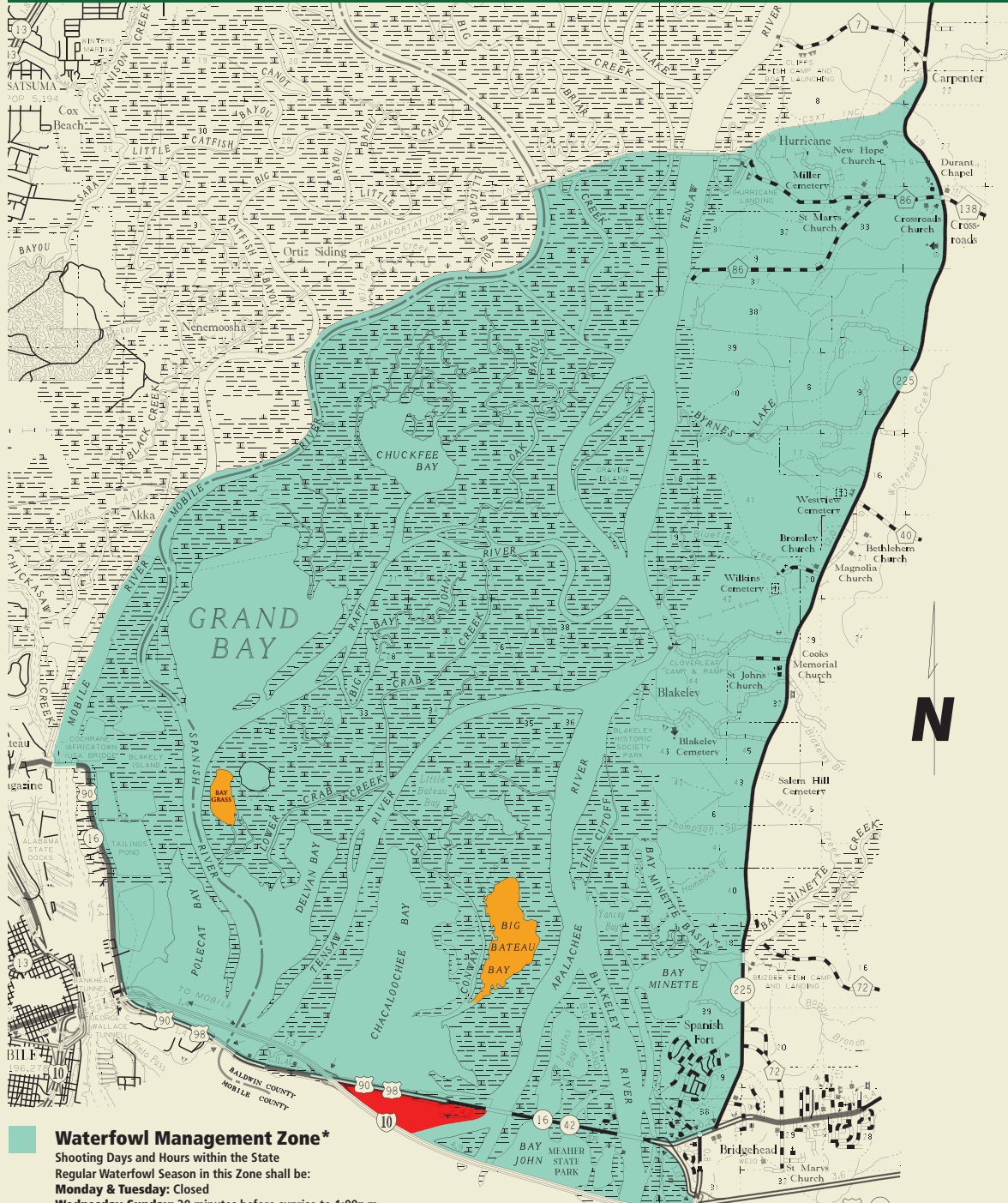


The Department of Conservation and Natural Resources does not discriminate on the basis of race, color, religion, age, sex, national origin, disability, pregnancy, genetic information or veteran status in its hiring or employment practices nor in admission to, access to, or operations of its programs, services or activities.

For more information, visit:
www.outdooralabama.com



MOBILE-TENSAW DELTA WATERFOWL MANAGEMENT ZONE



- Waterfowl Management Zone***
 Shooting Days and Hours within the State
 Regular Waterfowl Season in this Zone shall be:
Monday & Tuesday: Closed
Wednesday-Sunday: 30 minutes before sunrise to 1:00p.m.
 * For Special Early Teal & Goose Season shooting days and hours shall be Mon-Sun, 30 minutes before sunrise to sunset.
- Big Bateau Bay & Bay Grass**
 Operation of gasoline-powered motors is prohibited from the 2nd Saturday in November through the 2nd Saturday in February. Shooting times and days as stated for Zone above.
- Apalachee Refuge "NO HUNTING"**
 Operation of gasoline-powered motors is prohibited from the 2nd Saturday in November through the 2nd Saturday in February.

