

# HUNTING, FISHING, AND TRAPPING

## 2018-2019 SEASONS AND BAG LIMITS

Provided as a guide to hunting season. For questions, contact your local District Office.  
See our website at [www.outdooralabama.com](http://www.outdooralabama.com) for more hunting & fishing information.

### Important Notes:

All deer and turkey hunters are required to report their harvest using Game Check and have a deer / turkey harvest record (either paper or app form) in possession. See [www.outdooralabama.com](http://www.outdooralabama.com) for more information.

All persons hunting on private lands of another must have written permission in possession from the landowner with few exceptions.

Legal hunting hours for deer are 30 minutes before official sunrise time until 30 minutes after official sunset time.

Hunting by the aid of bait is illegal in Alabama (see Area Definition).

All required hunting and fishing licenses and waterfowl stamps must be in possession when hunting or fishing (either paper or digital form).

See hunter orange requirement and definition of open permit – public land. Consult wildlife management area map permits for special rules and regulations and seasons before hunting State Wildlife Management Areas.

Any party controlling hunting rights may, by choice, be more restrictive on seasons and bag limits than those stipulated below.

### DEER

**ANTLERED BUCKS** are defined as those male deer with bare antlers visible above natural hairline.

**UNANTLERED DEER** are defined as all deer without bony antlers visible above the natural hairline.

**WHITE-TAILED ANTLERED BUCK LIMIT** – Three per hunter during all combined seasons. One of the three must have at least 4 antler points 1” or longer on one antler (except for Barbour County). A point is defined as an antler projection of at least one inch in length from base to tip. Main beam tip shall be counted as a point regardless of length. **EXCEPTIONS:** 1.) **BARBOUR COUNTY ANTLER RESTRICTION** – white-tailed deer antlered bucks must have a minimum of three points on one side, (except on the statewide special youth deer hunting dates during which any antlered buck may be taken). 2.) **WILDLIFE MANAGEMENT AREA (WMA) BONUS BUCK** – One per hunter will be allowed to be harvested from a select collection of WMA’s on specific hunt dates depicted on the WMA map permits that will not count towards the hunter’s State 3 buck limit. Must be validated at WMA check station by WFF personnel.

**WHITE-TAILED UNANTLERED DEER LIMIT** - During the Unantlered Deer Gun, Special Muzzleloader, Bow and Arrow and Special Youth (under 16) Seasons, one unantlered deer may be taken per day in addition to one antlered buck per day. See Special Exception #3 for selected areas with one deer per day limit on U.S. Forest Service Lands.

**SPECIAL YOUTH (UNDER 16) DEER HUNTING** – Statewide, (includes all Privately Owned, Leased Lands and Open Permit – Public Lands (except Wildlife Management Areas) on November 9-12. Dog hunting in those counties or parts of counties where and how it is allowed during the regular dog deer hunting season. Same legal arms and ammunition apply as in Deer season, in accordance with Rule 220-2-.119. See the 2018-19 Wildlife Management Area Map Permits for youth deer hunting dates and other information.

**SPECIAL EXCEPTIONS:** If notes 1, 2, or 3 appear by the county listed, see the special exceptions at the end of this chart. Note (1) relates to dog deer hunting. Note (2) relates to U.S. Corp of Engineers Lands. Note (3) relates to U.S. Forest Service Lands.

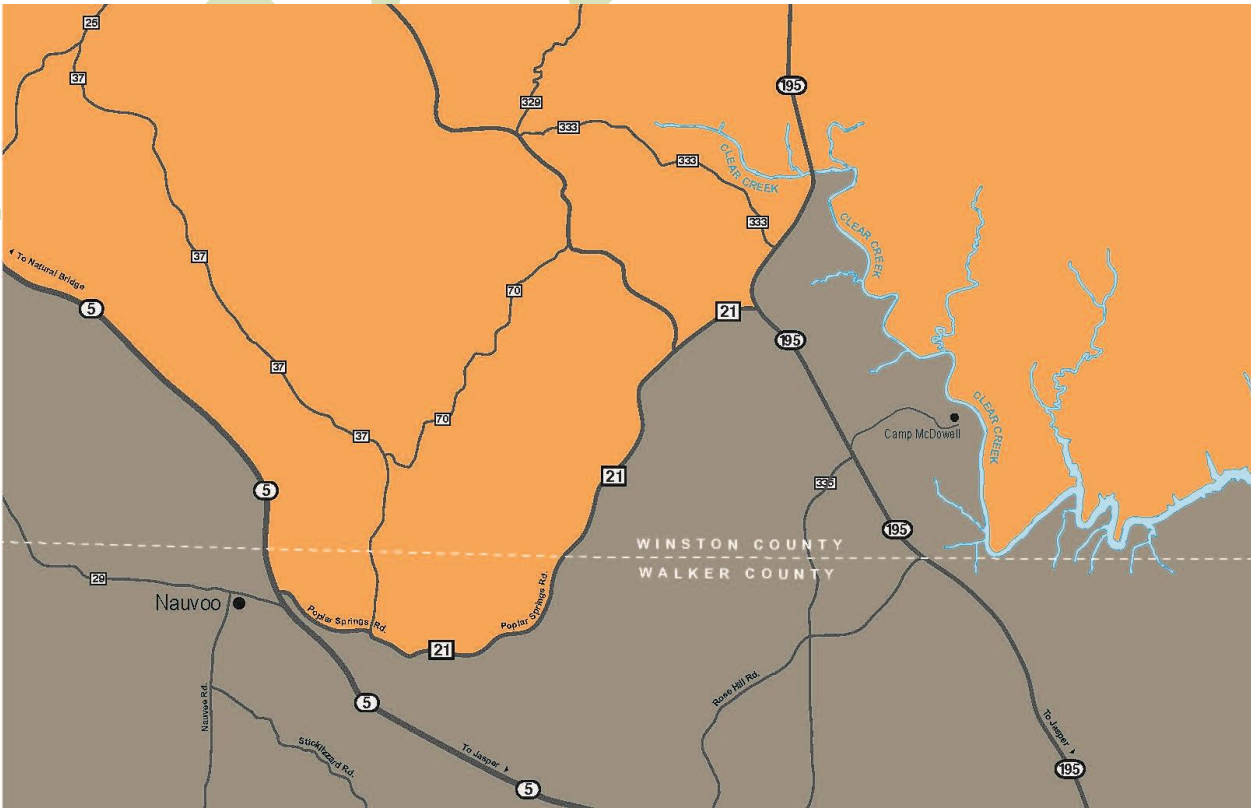
# 2018-2019 Deer Season Zone Map



D  
R  
A  
F  
T

# 2018-19 Deer Season Zone C Breakout Maps

*D  
R  
A  
F  
T*



# 2018-2019 Deer Season Zone Map

## Hunting Activity By Zone

### ZONE A

#### BOW AND ARROW – STALK HUNTING

Either sex: ..... October 15, 2018 - February 10, 2019

#### GUN DEER-STALK HUNTING:

##### ON PRIVATELY OWNED OR LEASED LAND ONLY

Either sex: ..... November 17, 2018 - February 10, 2019

##### ON OPEN PERMIT-PUBLIC LAND

Antlered Bucks Only: ..... November 17, 2018 - February 10, 2019

Either sex: ..... December 15, 2018 - January 1, 2019

#### DOG DEER HUNTING: WHERE ALLOWED

Either sex: ..... November 17, 2018 - January 15, 2019

### ZONE B

#### BOW AND ARROW – STALK HUNTING

Antlered Bucks only: ..... October 15, 2018 - October 24, 2018

Either sex: ..... October 25, 2018 - February 10, 2019

#### GUN DEER-STALK HUNTING:

##### ON PRIVATELY OWNED OR LEASED LAND ONLY

Either sex: ..... November 17, 2018 - February 10, 2019

##### ON OPEN PERMIT-PUBLIC LAND

Antlered Bucks: ..... November 17, 2018 - February 10, 2019

Either sex: ..... December 15, 2018 - January 1, 2019

#### DOG DEER HUNTING: WHERE ALLOWED

Either sex: ..... November 17, 2018 - January 15, 2019

### ZONE C

#### BOW AND ARROW – STALK HUNTING

Either sex: ..... October 15, 2018 - February 10, 2019

#### GUN DEER-STALK HUNTING:

##### ON PRIVATELY OWNED OR LEASED LAND ONLY

Antlered Bucks Only: ..... November 17, 2018 - February 10, 2019

Either sex: ..... November 17, 2018 - November 25, 2018

and December 22, 2018 - January 1, 2019

##### ON OPEN PERMIT-PUBLIC LAND

Antlered Bucks Only: ..... November 17, 2018 - February 10, 2019

Either sex: ..... December 22, 2018 - January 1, 2019

#### DOG DEER HUNTING: WHERE ALLOWED

Antlered Bucks: ..... November 17, 2018 - January 15, 2019

Either sex: ..... November 17, 2018 - November 25, 2018

and December 22, 2018 - January 1, 2019

### ALL ZONES

#### SPECIAL MUZZLELOADER AND AIR RIFLE

Privately Owned or Leased Land

and U.S. Forest Service Land -

Stalk Hunting Only (No Dogs)

Either sex: ..... November 12-16, 2018

REVISED 05-22-2018

# DRAFT

## DEER SEASON ZONES:

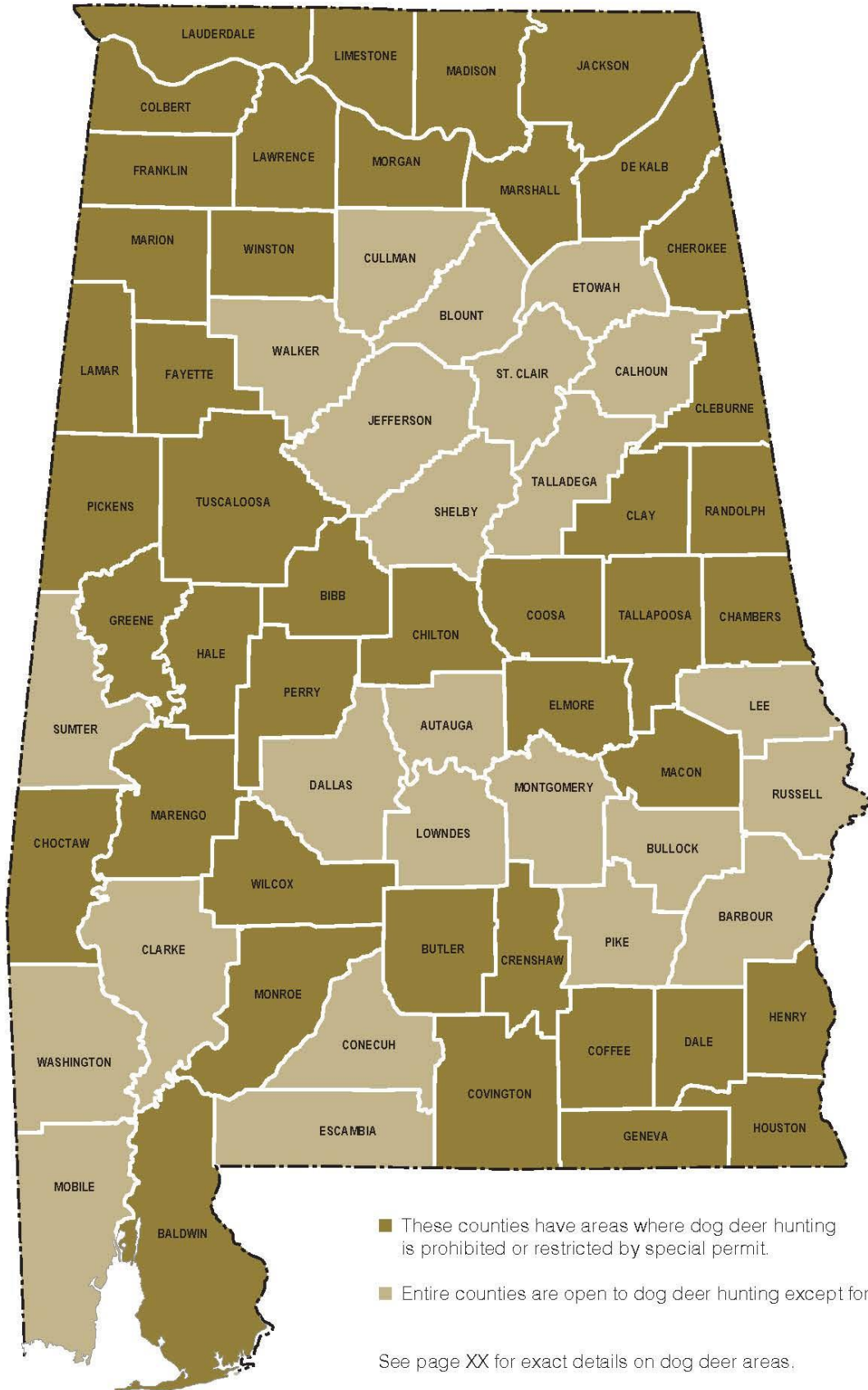
**ZONE A (see map):** Those areas north or east of a line described as: Beginning at the intersection of the Mississippi state line and US Hwy. 80 in Sumter County follow US Hwy. 80 east to the US Hwy. 80 Bypass and Alabama River; upstream along the Alabama River to I-65; south along I-65 to the intersection with I-85; north along I-85 to AL Hwy. 169 (exit 60); south along AL Hwy. 169 to AL Hwy. 1/US Hwy. 431; south along AL Hwy. 1/US Hwy. 431 to AL Hwy. 26; west along AL Hwy. 26 to Russell County Rd. 65; south along Russell County Rd. 65 to Russell County Rd. 4; west along Russell County Rd. 4 to Russell County Rd. 49; south along Russell County Rd. 49 to US Hwy. 82; east along US Hwy. 82 to the Chattahoochee River; south along the Chattahoochee River to AL Hwy. 10; west along AL Hwy. 10 to Henry County Rd. 57; south along Henry County Rd. 57 to Henry County Rd. 99; south along Henry County Rd. 99 to US Hwy. 431; south along US Hwy. 431 to Ross Clark Circle (bypass around Dothan); east along Ross Clark Circle to US Hwy. 231 to the Alabama/Florida state line. Excludes Zone C description below.

**ZONE B (see map):** Those areas south or west of a line described as: Beginning at the intersection of the Mississippi state line and US Hwy. 80 in Sumter County follow US Hwy. 80 east to the US Hwy. 80 Bypass and Alabama River; upstream along the Alabama River to I-65; south along I-65 to the intersection with I-85; north along I-85 to AL Hwy. 169 (exit 60); south along AL Hwy. 169 to AL Hwy. 1/US Hwy. 431; south along AL Hwy. 1/US Hwy. 431 to AL Hwy. 26; west along AL Hwy. 26 to Russell County Rd. 65; south along Russell County Rd. 65 to Russell County Rd. 4; west along Russell County Rd. 4 to Russell County Rd. 49; south along Russell County Rd. 49 to US Hwy. 82; east along US Hwy. 82 to the Chattahoochee River; south along the Chattahoochee River to AL Hwy. 10; west along AL Hwy. 10 to Henry County Rd. 57; south along Henry County Rd. 57 to Henry County Rd. 99; south along Henry County Rd. 99 to US Hwy. 431; south along US Hwy. 431 to Ross Clark Circle (bypass around Dothan); east along Ross Clark Circle to US Hwy. 231; south along US Hwy. 231 to the Alabama/Florida state line.

**ZONE C- UNANTLERED DEER SEASON:** Those areas of Blount, Colbert, Cullman, DeKalb, Etowah, Franklin, Jackson, Jefferson, Lawrence, Morgan, Marshall, St. Clair, Walker, and Winston Counties inside the following boundaries: begin at the intersection of US Hwy 431 and AL Hwy. 79 in Marshall County; north on US Hwy. 431 to Paint Rock River; Paint Rock River (Marshall County/Madison County line) to Tennessee River; west on Tennessee River to US Hwy. 43; south on US Hwy. 43 to intersection with AL Hwy. 13; south on AL Hwy. 13 to AL Hwy. 5; south on AL Hwy. 5 to Nauvoo, Walker County; east/north on Poplar Springs Road to Winston County Road 21; north on Winston County Road 21 to AL Hwy. 195; north on AL Hwy 195 to Clear Creek; south on Clear Creek to Sipsey Fork; south on Sipsey Fork to US Hwy. 69; north on US Hwy. 69 to Interstate 65; south on Interstate 65 to Interstate 59; north on Interstate 59 to US Hwy. 11; north on US Hwy. 11 to AL Hwy. 68; west on AL Hwy. 68 to AL Hwy. 227; north on AL Hwy. 227 to AL Hwy. 75; north on AL Hwy. 75 to AL Hwy. 35; north on AL Hwy. 35 to US Hwy. 72; west on US Hwy. 72 to AL Hwy. 279; south on AL Hwy. 279 to AL Hwy. 79; south on AL Hwy. 79; ending at the junction of US Hwy. 431 and AL Hwy. 79.

# DOG DEER HUNTING RESTRICTIONS AT A GLANCE

*D  
R  
A  
F  
T*



**(1) DOG DEER HUNTING RESTRICTIONS:**

***Dog Deer Hunting Prohibited Except by Special Permit from the Department:***

**BALDWIN; CHAMBERS; CHOCTAW** (that area south of AL Hwy. 10 and west of AL Hwy. 17 and north of County Road 18 from AL Hwy. 17 to County Road 14 then north of County Road 14 to the Mississippi state line); **COLBERT** (that area inside the following boundaries: from the intersection of the Natchez Trace Parkway and US Hwy. 72 west along US Hwy 72 to the Mississippi State line, north along the Mississippi State line to the Tennessee River, east along the Tennessee River to the intersection of the Natchez Trace Parkway, south along the Natchez Trace Parkway to the intersection of US Hwy. 72); **COOSA; COVINGTON** (north of US Hwy. 84); **ELMORE** (that area inside the following boundaries: from the Coosa County/ Elmore County line at the east bank of Lake Jordan, to AL Hwy. 9, south along AL Hwy. 9 to the intersection of US Hwy. 231, south along US Hwy. 231 to the intersection of AL Hwy. 14, west along AL Hwy. 14 to the east bank of the Coosa River, north along the east bank of the Coosa River to Lake Jordan, back to the Coosa County/Elmore County line); **GENEVA; HENRY; MACON** (that area inside the following boundaries: from County Road 24 at the Lee County line, west and south to County Road 26, west to County Road 10, southeast to County Road 5, south to County Road 47, south to County Road 2, east to the Russell County line); **MARENGO; MONROE; PICKENS** (north of US Hwy. 82); **TALLAPOOSA** and **WILCOX** counties. Individual property owners in **CHAMBERS** and **COOSA** counties may hunt with dogs on their own property without special permit. No dog deer hunting allowed on Open Permit-Public Land (see 220-2-.85).

**By Stalk Hunting Only, (No Dogs): BIBB AND PERRY:** (that area inside the following boundaries: east of AL Hwy. 219, south of US Hwy. 82 and north of AL Hwy. 183); **BUTLER** (that area south of AL Hwy. 106 and east of I-65); **CHEROKEE; CHILTON; CLEBURNE; COFFEE** (that area inside the following boundaries: AL Hwy. 134 from the Covington County Line, east to County Road 460, south to the Geneva County line, east to the Dale County line, north to AL Hwy. 134, west to AL Hwy. 87, north to US Hwy. 84, west to AL Hwy. 189, south to AL Hwy. 141, north to US Hwy. 84, west to the Covington County line); **CRENSHAW** (north of AL Hwy. 10 and that area inside the following boundaries, from the east city limit of Luverne, US Hwy. 29 east to the junction of County Road 57, County Road 57 south to the junction of Davis Road, Davis Road west to County Road 41, County Road 41 south to US Hwy. 331, US Hwy. 331 north to County Road 41, County Road 41 north to County Road 39, County Road 39 north to the Luverne city limit); **DALE** (that area inside the following boundaries: Judy Creek south to Dale County Road 36, east to AL Hwy. 27, north to the Henry County line, north to the Barbour County line, west to Judy Creek); **DEKALB; ELMORE** (that area inside the following boundaries: east of US Hwy. 231, south of AL Hwy. 14, west of Tumkeehatchee Creek and north of the Tallapoosa River); **FAYETTE** (that area inside the following boundaries: west of US Hwy 43 and north of AL Hwy. 18); **FRANKLIN; HALE AND PERRY:** (that area inside the following boundaries: from Hale County Road 32 at the Hale County Line, west to the intersection of AL Hwy. 25, AL Hwy. 25 north until it intersects with the Talladega National Forest boundary, following the boundary south until it intersects the Perry County line, following the National Forest boundary east to Perry County Road 23, south to the intersection of Perry County Road 29, south to the Spring Hill Church Road, Spring Hill Church Road west to the junction of Perry County Road 23 and AL Hwy. 14, west to the Hale County line); **GREENE; PICKENS; AND TUSCALOOSA:** (that area inside the following boundaries: in Pickens County from the intersection of US Hwy. 82 and County Road 63, south on County Road 63 to Benevola, County Road 2 (commonly known as the Romulus Road) east through Greene County to US Hwy. 82 in Tuscaloosa County); **HOUSTON; JACKSON; LAMAR; LAUDERDALE; LAWRENCE; LIMESTONE; MADISON; MARION; MARSHALL; MORGAN; RANDOLPH; TUSCALOOSA** (that area north of US Hwy. 82); and **WINSTON** (that area east of AL Hwy. 5 from the Walker County line to Natural Bridge and all that area north of US Hwy. 278).

**(2) U.S. CORP OF ENGINEERS LANDS:**

U.S. Corp of Engineers Lands in **Chambers, Greene, Pickens, Randolph** and **Sumter** counties special muzzleloader and air rifle and unantlered deer season same as privately owned or leased lands in those counties.

Be aware to consult U.S. Army Corps of Engineers (USACE) regulations regarding hunting activities and boat ramp use prior to hunting USACE regulated areas. Special Permits from the USACE may be required and some USACE refuge areas are closed to hunting. For complete information concerning hunting on the Tennessee Tombigbee Waterway (TTWW), visit the website at <http://www.sam.usace.army.mil/Missions/Civil-Works/Recreation/TennesseeTombigbee-Waterway/> or contact the TTWW office at (662)327-2142.

**(3) U. S. FOREST SERVICE (USFS)** (same as open permit for county), except Wildlife Mgmt. Areas –

one deer per day.

Stalk Hunting Only- No Dogs (except for USFS Lands within **Calhoun, Clay & Talladega** counties): Same season and dates as open permit-public lands (see page 4).

Dog Deer Hunting - Calhoun, Clay & Talladega counties during the Dog Deer Season - Antlered bucks only; on Thursdays and Fridays until 2:00 p.m.; on weekends during legal shooting hours. No Dog Deer hunting on Monday, Tuesday or Wednesday of each week unless a holiday falls on those days; No Dog Deer hunting on the Piney Woods/Ivory Mountain Area, the borders of which are defined as: bounded by the Cleburne County line to the north running east and west, then to the west by Clay CR 3 running south to State Rte. 49; The south border is Clay CR 66 running east and west from State Rte. 49 to Hwy. 9; The eastern border is Hwy. 9 running north from Clay CR 66 to the Cleburne County line.

**NOTICE: HUNTER ORANGE REQUIREMENT FOR HUNTING:**

All persons hunting any wildlife species (except turkey and migratory birds (including crows) and while hunting legally designated species during legal nighttime hours) during dates and in areas open by regulation to gun deer season to include special youth gun deer season and special muzzleloader deer season are required to wear an outer garment above the waist with a minimum of 144 square inches of hunter orange or either a full size hunter orange hat or cap. Hunters are not required to wear hunter orange when hunting from a stand elevated twelve (12) feet or more from the ground, when hunting in an enclosed box stand, when traveling in an enclosed vehicle, or when traveling on foot no more than twenty (20) feet directly between an operating enclosed vehicle and a stand where the hunter is exempt from the hunter orange requirement. The hunter orange must be worn when traveling on foot between an operating enclosed vehicle and exempt stand when the distance is more than a direct distance of twenty (20) feet. A small logo and/or printing is permitted on the front of hunter orange caps; otherwise, hunter orange must be of solid color and visible from any angle. Only hunter orange, commonly called blaze orange, ten-mile cloth, etc., is legal. The various shades of red as well as camo orange are not legal.

**OPEN PERMIT-PUBLIC LAND:**

Open Permit-Public Land is defined as governmentally owned land open for public hunting and/or lands made available to the public on an individual basis whether for a fee or not. Examples of such lands would be U.S. Forest Service lands, lands owned by lumber companies and utility companies available for use by hunters either through free permits, fee permits or no permit requirement. This does not include Alabama's Wildlife Management Areas. See the 2018-19 Wildlife Management Area Map Permits for information.

**HUNTER SAFETY RECOMMENDATION:**

Many hunters travel to and from their hunting area, tree stand, or blind just before dawn and after dusk. It is recommended that hunters use a small pen light while traveling to and from their stands or hunting area. There is also a small red flashing light that can be purchased that pins to a hat or other visible area. Use of a small light will help with the problem of identification of hunters during low light condition. This recommendation does not legalize the use of lights to illegally hunt game animals.

**TREE STAND SAFETY RECOMMENDATION:**

Falls from tree stands are the most common hunting accidents. Serious injury and death are likely to occur from such a fall.

**It is strongly recommended that no one hunt from an elevated stand without using a full body safety harness.**

**Full body harnesses are required when hunting from an elevated stand on a Wildlife Management Area.**

# TURKEY SEASON ZONES



**ZONE 1** MARCH 16 - APRIL 30

**ZONE 2** MARCH 30 - APRIL 30

**ZONE 3** APRIL 20 - APRIL 24

**ZONE 4**  
NOVEMBER 17 - NOVEMBER 29 (FALL)  
DECEMBER 15 - JANUARY 1 (FALL)  
MARCH 16 - APRIL 30 (SPRING)

**ZONE 5** NO SEASON

**GOBBLERS ONLY**  
One a day, five during combined fall and spring.

**SPECIAL YOUTH HUNT**  
Saturday & Sunday the week prior to opening of spring season.

**SPECIAL DISABLED HUNT**  
One day prior to all opening days. Participants must meet medical requirements of regulation 220-2-.109(2)(d).

**DELAYED TURKEY SEASON**  
Barbour, J.D. Martin-Skyline, Hollins, Oakmulgee, Lowndes, Choccolocco, Perdido River is March 23 – April 30, 2019



**REMEMBER TO GAME CHECK YOUR HARVEST!**

Revised 05-22-2018

**MOURNING and WHITE-WINGED DOVE:**  
Shooting on opening day in each zone starts at 12:00 noon until Sunset.

**NORTH ZONE:** All counties except those listed below in south zone.

Limit 15 a Day – (90 Days)

**Split Season with Shooting Hours:**

- 12 O'clock noon until Sunset (*Afternoon Shooting Only*)
- One-half hour before Sunrise until Sunset (*All Day*)
- One-half hour before Sunrise until Sunset (*All Day*)
- One-half hour before Sunrise until Sunset (*All Day*)

- September 8*
- September 9 – October 14*
- November 17 – November 25*
- December 15 – January 27*

**SOUTH ZONE:** Baldwin; Barbour; Coffee; Covington; Dale; Escambia; Geneva; Henry; Houston; and Mobile.

Limit 15 a Day – (90 days)

**Split Season with Shooting Hours:**

- 12 O'clock noon until Sunset (*Afternoon Shooting Only*)
- One-half hour before Sunrise until Sunset (*All Day*)
- One-half hour before Sunrise until Sunset (*All Day*)
- One-half hour before Sunrise until Sunset (*All Day*)

- September 15*
- September 16 – October 21*
- November 17 – November 25*
- December 15 – January 27*



**RABBIT:** Limit 8 a Day – 8 in Possession

*September 15 – March 3*

No running of dogs during daytime or after 3:00 A.M. during and in areas of spring turkey season.

**SQUIRREL:** Limit 8 a Day – 8 in Possession

*September 15 – March 3*

**RACCOON:** No Bag Limit – Private Owned and Leased Lands

*No Closed Season*

Limit 5 Per Party – Open Permit-Public Land

*No Closed Season*

No running of dogs during daytime or after 3:00 A.M. during and in areas of spring turkey season. *Note: Check with USFS for further restrictions.*

**OPOSSUM:** No Bag Limit

*No Closed Season*

No running of dogs during daytime or after 3:00 A.M. during and in areas of spring turkey season. *Note: Check with USFS for further restrictions.*

**ALLIGATOR (2018):**

*By Special Permit Only*

Must register on-line at [www.outdooralabama.com](http://www.outdooralabama.com) between June 5 (8:00 a.m.) and July 11 (8:00 a.m.). Must be a resident or lifetime hunting license holder to register.

**West Central Zone: Dallas; Monroe** (north of US Hwy. 84) and **Wilcox** (nighttime only).

*Sunset August 9 – Sunrise August 12  
Sunset August 16 – Sunrise August 19*

**Southwest Zone: Baldwin; Clarke; Mobile; Monroe** (east of US Hwy. 43 and south of US Hwy. 84); and **Washington** Counties (nighttime only).

*Sunset August 9 – Sunrise August 12  
Sunset August 16 – Sunrise August 19*

**Southeast Zone: Barbour, Coffee, Covington, Dale, Geneva, Henry, Houston, and Russell** counties (nighttime only)

*Sunset August 11 – Sunrise September 3*

**Lake Eufaula Zone: Alabama State Waters Only** (daytime and nighttime).

*Sunset August 17 – Sunrise October 1*

**BOBCAT<sup>(1,3)</sup>, COYOTE<sup>(2)</sup>, FERAL SWINE<sup>(2)</sup> AND FOX<sup>(3)</sup>:**

No Bag Limit – Daylight Hours Only

*No Closed Season*

See 220-2-.07 for legal hunting hours. Dogs cannot be used to hunt during and in areas of spring turkey season.

1) Bobcat - See tagging requirement under regulation 220-2-.30

2) Coyote and Feral Swine – trapping by landowner or his agent.

Feral Swine – upon capture, it shall be unlawful to release any live feral swine. See regulation 220-2-.86

3) Bobcat and Fox – Trapping is limited to legal fur bearer season.

*Note: Permit may be obtained through your local district office for the trapping of nuisance furbearers outside the dates of trapping seasons.*

*Check with USFS for further restrictions.*

**FERAL SWINE (2019):** (privately owned and leased lands only) *Special Nighttime Season*  
No Bag Limit – May be hunted during nighttime hours *May 1 – August 31*  
Dogs only – no firearms allowed.  
*Note: Permit may be obtained through your local district office for nighttime nuisance control hunting outside of the dates of deer gun season.*

---

**BEAVER, NUTRIA, AND GROUNDHOG:**  
No Bag Limit – Daylight Hours Only *No Closed Season*

---

**STARLINGS, CROWS, AND ENGLISH SPARROWS:**  
No Bag Limit – Daylight Hours Only *No Closed Season*

---

**BEAR, MOUNTAIN LION AND RUFFED GROUSE** *No Open Season*

---

**WOODCOCK:** Limit 3 a Day *Note: Contingent upon Federal Register*  
Shooting Hours – One-half hour before Sunrise to Sunset. *December 14 – January 27*

---

**SNIPE:** Limit 8 a Day *Note: Contingent upon Federal Register*  
Shooting Hours – One-half hour before Sunrise to Sunset. *November 10 – February 24*

---

**CLAPPER RAIL, VIRGINIA RAIL, SORA AND GALLINULE:** *Note: Contingent upon Federal Register*  
Limit 15 a Day *September 8 – September 23*  
Shooting Hours – One-half hour before Sunrise to Sunset. *November 23 – January 15*

---

**BULLFROG AND PIG FROG:**  
Limit 20 frogs in aggregate per person from 12 Noon to 12 Noon the following day.  
May be hunted daytime or nighttime hours *No Closed Season*

---

**TRAPPING**

**BOBCAT, FOX, MINK, MUSKRAT, OTTER AND STRIPED SKUNK:** *November 3 – February 28*  
*Note: Permit may be obtained through your local District Office for the trapping of nuisance furbearers outside the dates of trapping season.*

**BEAVER, COYOTE, NUTRIA, FERAL SWINE, OPOSSUM and RACCOON:** *No Closed Season*  
*Note: All bobcat and otter, regardless of method of harvest, are required to be tagged by a representative of the Wildlife and Freshwater Fisheries Division within 14 days of harvest or may be left with a taxidermist with a completed tagging form, and the taxidermist is required to have the bobcat or otter tagged within 14 days of receipt.*

---

**SPECIAL YOUTH WATERFOWL HUNTING DAYS:** *Note: Contingent upon Federal Register  
November 17 and February 2*  
Same shooting hours, bag limits, and legal arms and ammunition apply as in regular  
waterfowl season, in accordance with Rule 220-2-.119.

---

**SPECIAL TEAL SEASON:** *Note: Contingent upon Federal Register  
September 8 – September 23*  
Limit 6 a Day  
Shooting Hours – One-half hour before Sunrise to Sunset.

---

**DUCK, COOT, MERGANSER:** *Note: Contingent upon Federal Register  
November 23 – November 24  
December 1 – January 27*  
Duck: Limit 6 ducks a day and may include no more than 4 Mallard (no more than 2 of  
which may be female), 3 Wood Ducks, 1 Mottled Duck, 2 Black Duck, 2 Redhead, 2 Pintail,  
2 Canvasback and 3 Scaup.  
Merganser: Limit 5 a day, only 2 may be a Hooded Merganser.  
Coot: Limit 15 a day  
Shooting Hours – One-half hour before Sunrise to Sunset.

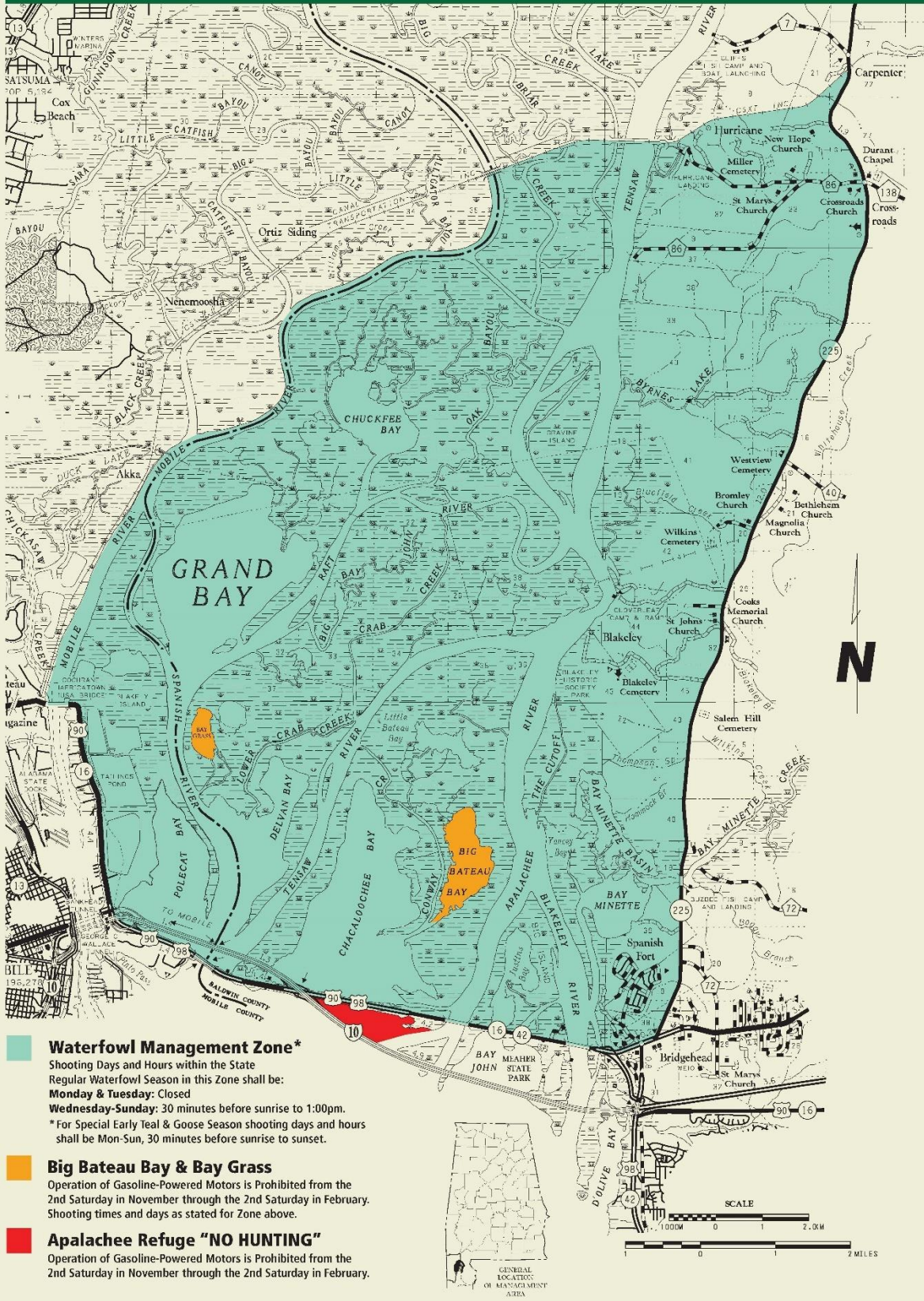
---

**GEESE:** *Note: Contingent upon Federal Register*  
**Statewide:**  
**ALL GEESE:** *September 1 – September 30*  
The aggregate bag limit of 5 dark geese (Canada, White-fronted, Brant) shall not include  
more than 1 Brant. Additionally, an aggregate bag limit of 5 light geese (Snow, Blue,  
Ross's) may be harvested per day.  
**DARK GEESE (CANADA, WHITE-FRONTED, BRANT):** *October 13 – October 27  
November 23 – November 24  
December 1 – January 27*  
Limit 5 a day, shall not include more than 3 Canada Geese  
and 1 Brant, all five may be White-Fronted Geese.  
**LIGHT GEESE (SNOW, BLUE, ROSS'S):** *October 13 – October 27  
November 23 – November 24  
December 1 – January 27*  
The aggregated bag limit shall be 5 a day.  
Shooting Hours – One-half hour before Sunrise to Sunset.

---



# MOBILE-TENSAW DELTA WATERFOWL MANAGEMENT ZONE



DRAFT

## **LEGAL ARMS AND AMMUNITION FOR HUNTING FULLY AUTOMATIC FIREARMS PROHIBITED.**

**GENERAL PROHIBITIONS:** It shall be unlawful for any person to use any method or use any weapon or ammunition contrary to this regulation while hunting or attempting to hunt game birds and animals or other species provided for herein unless expressly provided for by duly enacted laws of the State of Alabama. It shall be unlawful for any person to refuse to submit firearms and ammunition or any device, instrument or accessory used in hunting to Conservation Officers for inspection.

It shall be unlawful for any person to hunt with a bow or gun that has a light source attached that is capable of casting a beam of light (including a laser sight) forward of said bow or gun or to possess such a light source adapted for attachment to said bow or gun while hunting, except as provided for in 220-2-.02. It shall be unlawful to possess any equipment that uses electronics to increase the ability to see in the dark (night vision equipment) while hunting any species of wildlife, both protected or unprotected species.

**DEER:** Rifles using centerfire, mushrooming ammunition. Air powered guns, .30 caliber or larger. Shotguns, 10 gauge or smaller using buckshot, slugs, or single round ball. Muzzle-loaders and Black Powder Handguns-- .40 caliber or larger during the special muzzleloader season. Long bows, compound bows, or crossbows. Handguns or pistols using centerfire, mushrooming ammunition.

**TURKEY:** Shotguns, 10 gauge or smaller using standard No. 2 shot or smaller. Long bows, compound bows and **crossbows**. Nothing in this section is intended to prohibit the possession of rifles, shotgun/rifle combinations (drilling) or buckshot and slugs when the hunter is stalk hunting both deer and turkey provided no person shoots or attempts to shoot turkey with the rifle or shotgun using buckshot or slugs.

**MIGRATORY BIRDS:** Shotguns, 10 gauge or smaller, plugged with a one piece filler incapable of removal without disassembling the gun or otherwise incapable of holding more than 3 shells using shot compositions and shot sizes that are approved by the U.S. Fish and Wildlife Service. Waterfowl hunters shall not possess any size lead shot. Long bows, compound bows, or crossbows.

**RACCOON & OPOSSUM:** Nighttime hunting--Shotguns using No. 6 shot or smaller; rimfire firearms. Daytime hunting - See "OTHER GAME BIRDS OR ANIMALS".

**BOBCAT, GROUNDHOG, UNPROTECTED WILDLIFE, FOX, COYOTE & FERAL SWINE:** Rifles of any caliber. Handguns or pistols. Shotguns, 10 gauge or smaller. Long bows, compound bows, or crossbows.

**OTHER GAME BIRDS OR ANIMALS:** Rifles using rimfire ammunition or those operated by air. Muzzleloaders and black powder handguns of any caliber. Long bows, compound bows, or crossbows. Shotguns, 10 gauge or smaller, using standard No. 4 shot or smaller. Handguns or pistols. Blowguns using darts propelled by the hunter's breath only. Sling shots.

**SPEAR:** FERAL SWINE may be taken by hand thrown spear. The hand thrown spear shall have a minimum of two sharpened edges of 7/8 inch minimum diameter in width. The spear shall only be hand thrown.

**FISHING**

- 1) The following seasons for taking fish in accordance with the below stated times, places, manners and restrictions are hereby established. Unless noted below, the seasons for all designated game and commercial fish are open continuously.
- 2) It shall be unlawful for any person to take or have in possession more than the daily limit for any fish as established herein. This shall not apply to fish held live for release by the sponsor or its designated agent after a bonafide fishing tournament provided they are released unharmed to the public waters from which they were taken as soon as reasonably possible on the same day they were taken. This does not obligate the sponsor or its designated agent to release dead or dying fish.
- 3) Except as otherwise noted, it shall be unlawful to possess any fish less than or greater than size restrictions as established herein. Size restrictions on all fish are determined by measuring from the front of the mouth to the tip of the tail with both mouth and tail closed. Except as otherwise provided for State and Federally owned and/or managed fishing lakes and ponds, the daily creel, possession limits and size restrictions for fish in all public waters of this State shall be as follows:

**DAILY CREEL LIMITS, POSSESSION LIMITS AND SIZE LIMITS**

The creel and possession limits for fish in all public waters of this State, except as otherwise provided for certain State and Federally owned and/or managed fishing lakes and ponds, shall be as follows:

- a.) **Black Bass** .....10  
includes combinations of largemouth, smallmouth, spotted, Alabama, shoal and those species formerly known as “redeye” bass, which are now known separately as Coosa, Warrior, Cahaba, Tallapoosa and Chattahoochee bass, based on their respective drainages. The Alabama bass was formerly known as spotted bass in the Mobile drainage. No more than 5 of the daily creel limit of 10 may be smallmouth bass. See exceptions for shoal bass in specific tributaries of the Chattahoochee River.
- b.) **Walleye** .....2  
It shall be illegal to take or attempt to take walleye by any method from Sweetwater Lake located in the Talladega National Forest, Cleburne County, from White Plains Lake (also known as Whitesides Mill Lake), Calhoun County and from Shoal Creek upstream of White Plains Lake, Calhoun and Cleburne Counties. It shall also be illegal to take or attempt to take walleye by any method from Lake Mitchell on the Coosa River between Mitchell Dam and Lay Dam or from its tributary streams; Walnut Creek in Chilton County, Hatchet Creek in Coosa and Clay Counties and Weogufka Creek in Coosa County, **Mulberry Fork River or any of its tributary streams in Blount, Cullman, Lawrence, Walker or Winston Counties**. Any walleye taken in these lakes or streams shall immediately be released back into the waters from which they were taken with least possible harm.
- c.) **Sauger** .....5  
It is illegal to possess any Sauger less than 15 inches in total length.
- d.) **White Bass** .....15
- e.) **Yellow Bass** .....15
- f.) **Saltwater Striped Bass, and Hybrids or Combinations** .....15  
No more than five of the 15 may exceed 22 inches in total length. See exceptions for Lewis Smith, Inland, Yates, and Thurlow reservoirs and Lake Martin.
- g.) **Crappie** .....30  
It is illegal to possess any crappie less than nine inches in total length taken from Alabama public waters, including Aliceville Reservoir and Pickwick Reservoir. Waters exempt from the nine-inch crappie limit include impoundments less than 500 surface acres, and the reciprocal waters of the Chattahoochee River and Impoundments and their tributaries, Bear Creek Reservoir (Big Bear Lake of the B.C.D.A. Lakes), Lake Jackson at Florala and Weiss Reservoir. See exception for Weiss Reservoir.
- h.) **Yellow Perch** ..... *No Limit*
- i.) **Catfish (under 34 inches)** ..... *No Limit*

- j.) **Catfish** (over 34 inches) ..... *1*  
This size limit shall not apply to catfish harvested from the Perdido, Conecuh, Blackwater, Yellow, Choctawhatchee, Chipola, and Chattahoochee rivers basins. It shall be unlawful to transport live catfish 34 inches in length or greater beyond the boundaries of this state.
  - k.) **Bream** ..... *50*
  - l.) **Rainbow Trout** ..... *5*  
It shall be unlawful to cull from the creel any trout caught from the Sipsey Fork from Lewis Smith Dam downstream to the confluence with the Mulberry Fork. Culling is defined as removing and releasing a trout from the creel (live well, stringer, basket, bucket, cooler or other container) whether or not it is replaced with another trout.
  - m.) **Alligator Gar** ..... *1*
  - n.) **Sturgeon** ..... *Closed Season*  
All sturgeon must be immediately returned to water with least possible harm.
  - o.) **Paddlefish or Spoonbill** ..... *Closed Season*  
Except for those holders of special commercial harvest permits, all paddlefish must be immediately returned to water with least possible harm.
- 4) **SIZE LIMITS** - As provided for above, as posted in State and Federally owned and/or managed public fishing lakes and ponds, and as follows:
- a. **Chattahoochee River Tributaries** - It is illegal to possess shoal bass in Little Uchee, Uchee, Osanippa, Halawakee and Wacoochee creek.
  - b. **Demopolis Reservoir** - It is illegal to possess any black bass less than 14 inches in total length.
  - c. **Guntersville Reservoir and its Tributary of Town Creek** - It is illegal to possess any largemouth or smallmouth bass less than 15 inches in total length.
  - d. **Harris Reservoir** - It is illegal to possess any largemouth bass between 13 inches and 16 inches in total length.
  - e. **Lake Jackson at Florala** - Creel limit of five black bass greater than 12 inches in total length. Only one of the five can be over 22 inches in total length.
  - f. **Inland Reservoir** - It is illegal to possess more than two saltwater striped bass that exceed 22 inches in total length in the daily creel limit and only one of those may exceed 30 inches in total length.
  - g. **Lewis Smith Reservoir** - It is illegal to possess more than two saltwater striped bass that exceed 22 inches in total length in the daily creel limit. It shall be unlawful to intentionally cull from the creel any saltwater striped bass from June 15<sup>th</sup> to October 15<sup>th</sup>. (See paragraph 5)
  - h. **Lewis Smith Reservoir** - It is illegal to possess any black bass between 13 inches and 15 inches in total length unless permitted in writing by the Commissioner of the Department of Conservation and Natural Resources.
  - i. **Little Bear Creek Reservoir of the B.C.D.A Lakes** – It is illegal to possess largemouth bass between 13 inches and 16 inches in total length.
  - j. **Lake Martin** - It is illegal to possess more than two saltwater striped bass that exceed 22 inches in total length in the daily creel limit. It shall be unlawful to intentionally cull from the creel any saltwater striped bass from June 15<sup>th</sup> to October 15<sup>th</sup>. (See paragraph 5)
  - k. **Pickwick Reservoir** - It is illegal to possess any smallmouth bass or largemouth bass less than 15 inches in total length.
  - l. **Thurlow Reservoir** - It is illegal to possess more than two saltwater striped bass that exceed 22 inches in total length in the daily creel limit and only one of those may exceed 30 inches in total length.
  - m. **Walter F. George Reservoir (Lake Eufaula) and its Tributaries** - It is illegal to possess any largemouth bass less than 14 inches in total length.
  - n. **Weiss Reservoir** - It is illegal to possess crappie less than 10 inches in total length.
  - o. **West Point Reservoir and its Tributaries** - It is illegal to possess any largemouth bass less than 14 inches in total length.

- p. **Wheeler Reservoir** - It is illegal to possess any smallmouth bass less than 15 inches in total length.
  - q. **Wilson Reservoir and its Tributaries of Big Nance and Town Creeks** - It is illegal to possess any smallmouth bass less than 15 inches in total length.
  - r. **Yates Reservoir** - It is illegal to possess more than two saltwater striped bass that exceed 22 inches in total length in the daily creel limit and only one of those may exceed 30 inches in total length.
  - s. **Chattahoochee River and Impoundments and Tributaries** - Special creel limits apply in reciprocal waters as specified under regulation 220-2-.122.
- 5.) For the purposes of this regulation in paragraph 3.k, 4.g and 4.j. and 5, “culling” shall be defined as removing and releasing a fish from the creel (live well, stringer, basket, bucket, cooler, or other container) whether it is replaced or not.