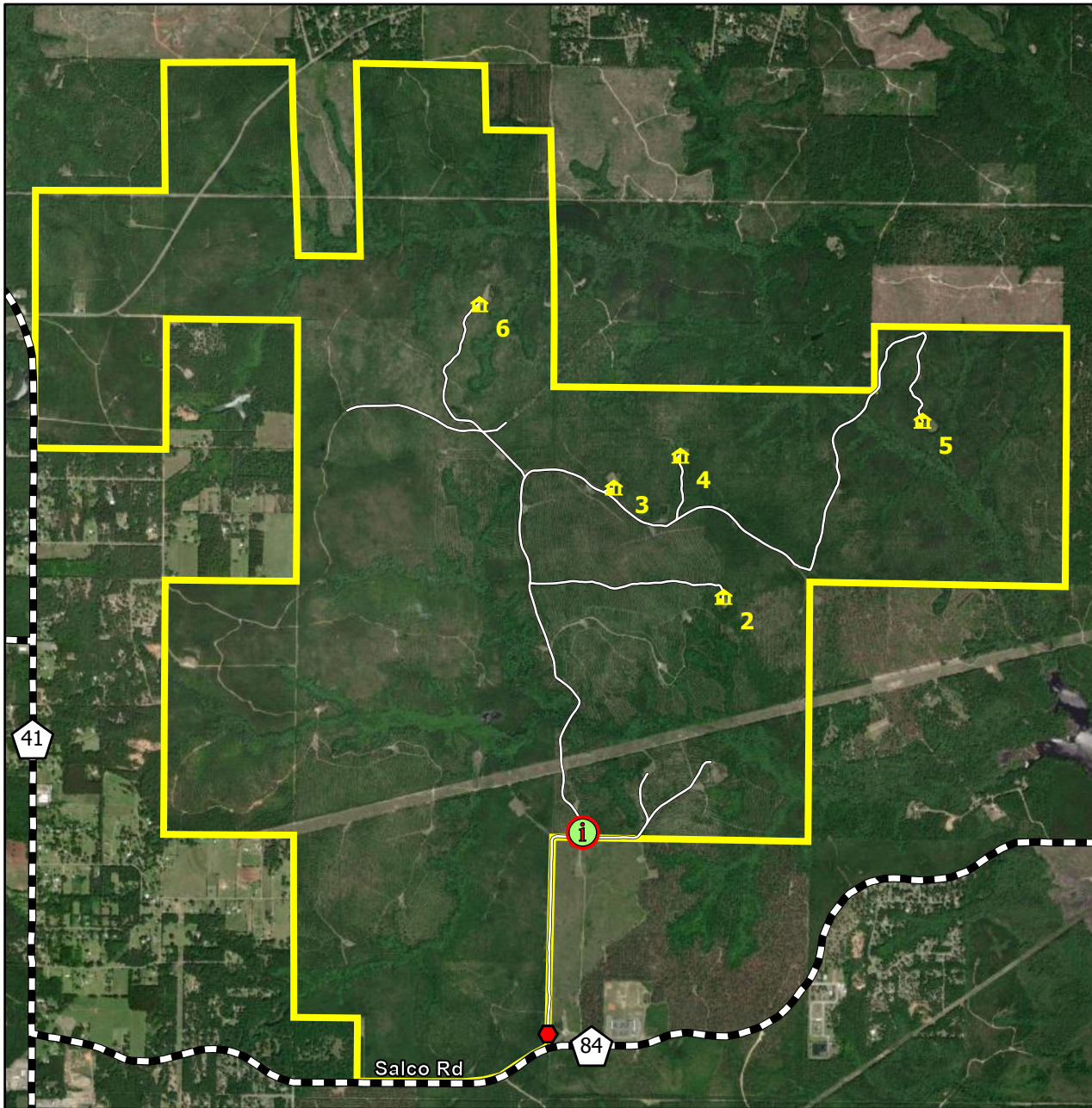


# UNIVERSITY OF SOUTH ALABAMA FOUNDATION

## PHYSICALLY DISABLED HUNTING AREA



UNIVERSITY OF SOUTH ALABAMA  
FOUNDATION



- Kiosk
- Gate
- Shooting House
- Physically Disabled Hunting Area



0 2,500 5,000 10,000 Feet

### FROM MOBILE OR MONTGOMERY:

From I-65 take Highway 43 (Exit 19) north for approximately six miles to Salco Road (Mobile County Road 84-near Akzo-Nobel Chemical Plant). Turn West on Salco Road and go approximately four miles and the entrance is on the north side of the road.

Season is Mondays, Wednesdays, and Saturdays from November 1 to February 10. Bag limit is one (1) deer (either sex) per day and three (3) deer per season. All antlered bucks harvested must be included as part of the annual statewide three (3) buck limit. Archery only from November 1 to November 14. While shooting houses are not designed for archery hunting, especially with a long bow, this opportunity is being provided for those that desire to use crossbows or other archery equipment.

**ALL HUNTING MUST BE DONE FROM THE SHOOTING HOUSE. ALL HUNTERS MUST SIGN IN PRIOR TO HUNTING. AFTER HUNTING, SIGN OUT AND RECORD ALL HARVEST AND WILDLIFE OBSERVATION DATA IN THE LOG LOCATED AT THE KIOSK.**

**FOR RESERVATIONS CALL: 251-626-5474**

