

PINE HILLS

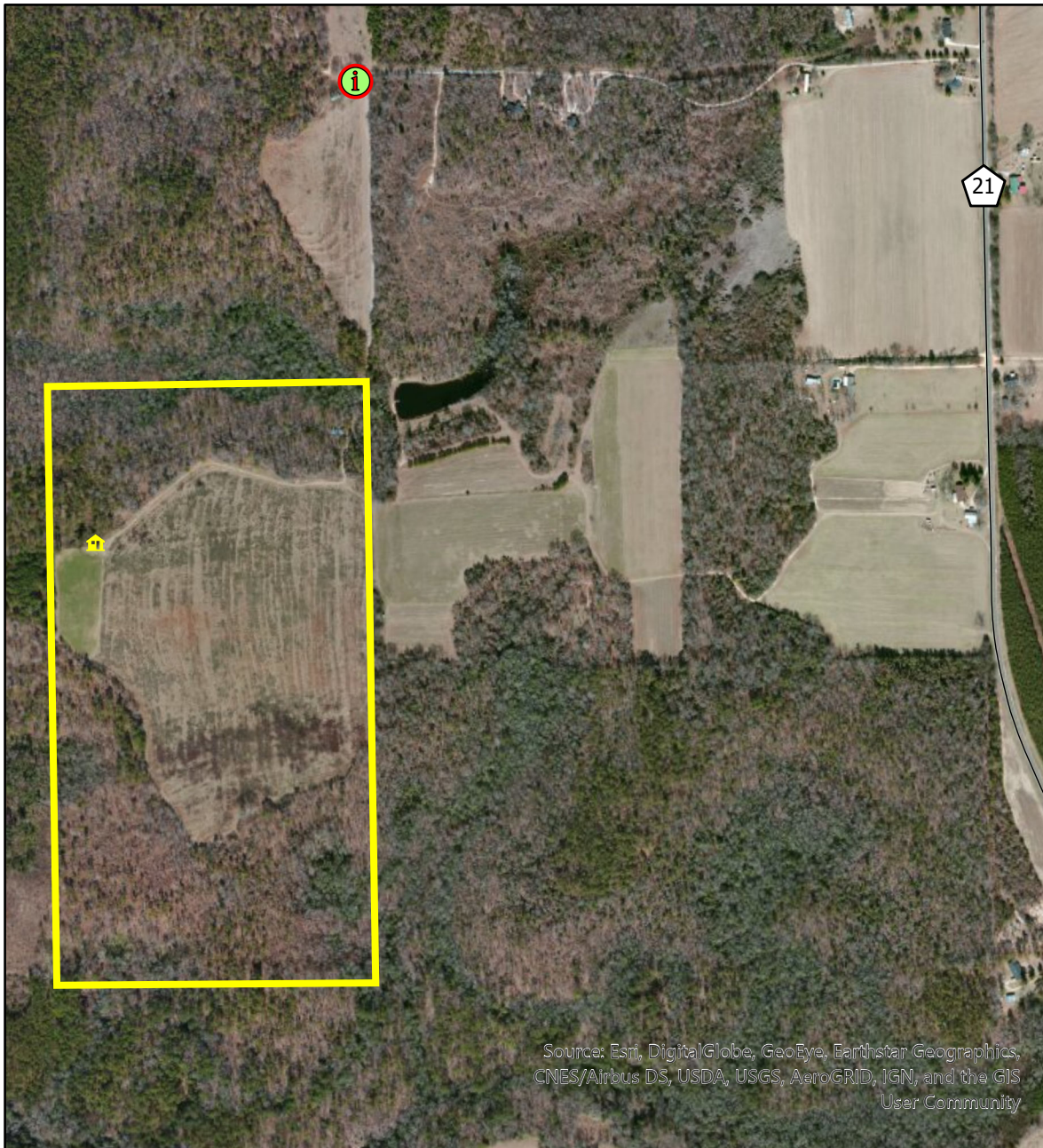
PHYSICALLY DISABLED HUNTING AREA



FROM BIRMINGHAM: From I-65 take Exit 200 (Verbena) and go right onto Chilton County Road 59 for 2.4 miles and take a left onto Chilton County Road 57 (turns into Autauga County Road 57), continue for 4.6 miles and take a right onto Autauga County Road 20 for 3.6 miles and take a right onto Autauga County Road 49 for 0.2 miles and take a right onto Autauga County Road 21 for 1.7 miles. Turn left into the driveway between mail boxes 2077 and 2079. Travel approximately 0.5 miles to the landline of the property.

FROM MONTGOMERY: From I-65, take Exit 186 (Prattville-Pine Level) and go north on U.S. Highway 31 for 2.1 miles and take a left on Autauga County Road 40 West. Continue for approximately 8.4 miles to Autauga County Road 21 and take a right on Autauga County Road 21 North for 7.2 miles. (this is 1.7 miles north of White City) turn left into the driveway between mailbox 2077 and 2079 and continue approximately 0.5 miles.

Season is Tuesdays, Thursdays, and Saturdays from October 14 to February 10. Bag limit is one (1) deer per day (either sex) and three (3) deer per season. All antlered bucks harvested must be included as part of the annual statewide three (3) buck limit. Archery only from October 14 to February 10. Muzzleloader or archery on November 16 & 18. While shooting houses are not designed for archery hunting, especially with a long bow, this opportunity is being provided for those that desire to use crossbow or other archery equipment.



Source: Esri, DigitalGlobe, GeoEye, Earthstar Geographics, CNES/Airbus DS, USDA, USGS, AeroGRID, IGN, and the GIS User Community

- Kiosk
- Shooting House
- Physically Disabled Hunting Area



0 500 1,000 2,000 Feet

**ALL HUNTING MUST BE DONE FROM THE SHOOTING HOUSE.
ALL HUNTERS MUST SIGN IN PRIOR TO HUNTING. AFTER HUNTING, SIGN OUT AND RECORD ALL HARVEST AND WILDLIFE OBSERVATION DATA IN THE LOG LOCATED AT THE KIOSK.**

FOR RESERVATIONS CALL: 205-339-5716

