

# MACON STATE FOREST

## PHYSICALLY DISABLED HUNTING AREA



0 500 1,000 2,000 Feet



Kiosk



Shooting House



Physically Disabled Hunting Area

**FOR RESERVATIONS CALL: 1-800-392-5679**

**Gun hunting is limited to shotguns with slugs only.**

**ALL HUNTING MUST BE DONE FROM THE SHOOTING HOUSE.  
ALL HUNTERS MUST SIGN IN PRIOR TO HUNTING. AFTER  
HUNTING, SIGN OUT AND RECORD ALL HARVEST AND WILDLIFE  
OBSERVATION DATA ON THE SIGN IN/OUT SHEET LOCATED AT THE  
KIOSK.**

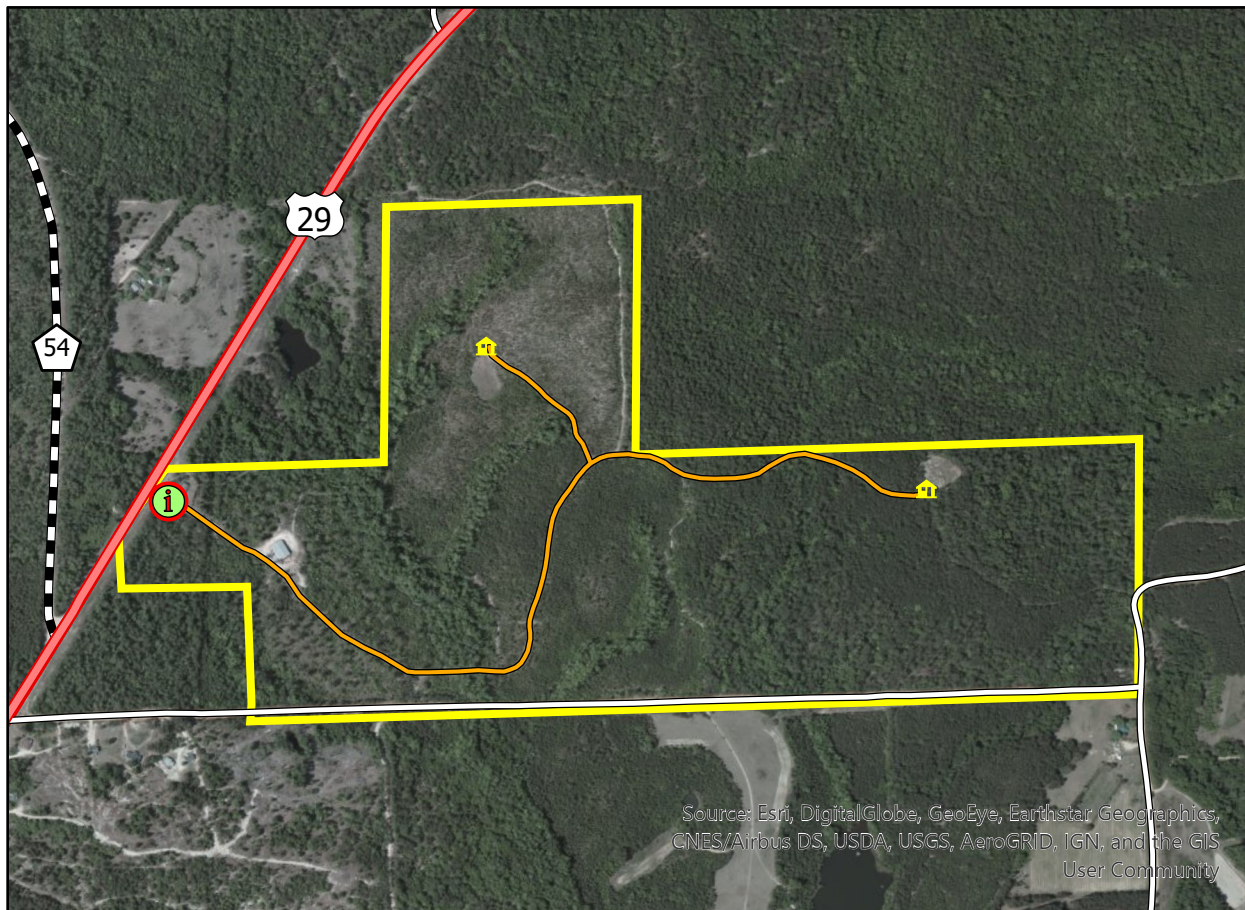
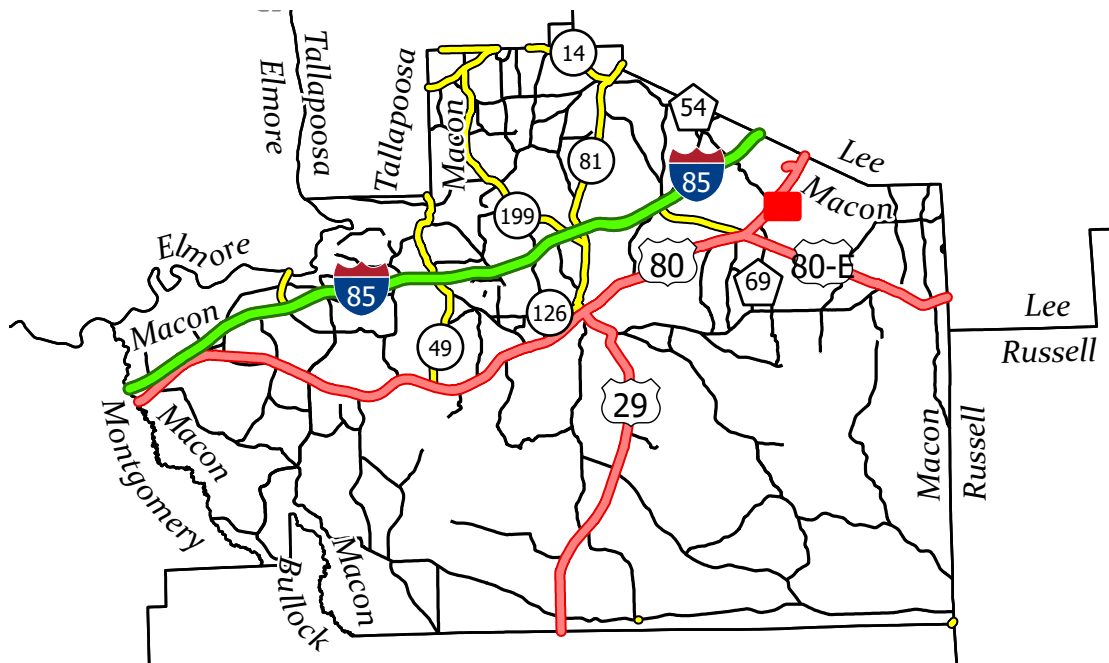
### FROM MONTGOMERY:

Take I-85 North and go approximately 40 miles to the Wire Road Exit 42. Take Exit 42, at stop sign turn right onto State Highway 186 East, and go approximately 3.5 miles to U.S. 29. Take off ramp. At stop sign turn left onto U.S. 29 North and go 1.5 miles. Look for Macon State Forest-Alabama Forestry Commission Office Sign, take first driveway to the right just past sign, and the Forestry Commission Office will be on the left of driveway. The check-in station will be on the right.

### FROM AUBURN:

Starting at the intersection of Hwy 29 (South College Street) and Interstate I85 (exit 51), take Hwy 29 South 6 miles. Look for the Macon State Forest – Alabama Forestry Commission office sign. Turn left into the driveway at the AFC Office. The AFC Office will be located on the left of the driveway, the PDHA check-in kiosk will be located on the right of the driveway.

Season is Mondays, Wednesdays and Saturdays from November 1 to February 10. Bag limit is one (1) deer, either sex per day and **THREE (3) DEER PER SEASON**. All antlered bucks harvested must be included as part of the annual statewide three (3) buck limit. Archery only from November 1 to November 18. While shooting houses are not designed for archery hunting, especially with long bow, this opportunity is being provided for those that desire to use crossbows or other archery equipment.



Source: Esri, DigitalGlobe, GeoEye, Earthstar Geographics, CNES/Airbus DS, USDA, USGS, AeroGRID, IGN, and the GIS User Community