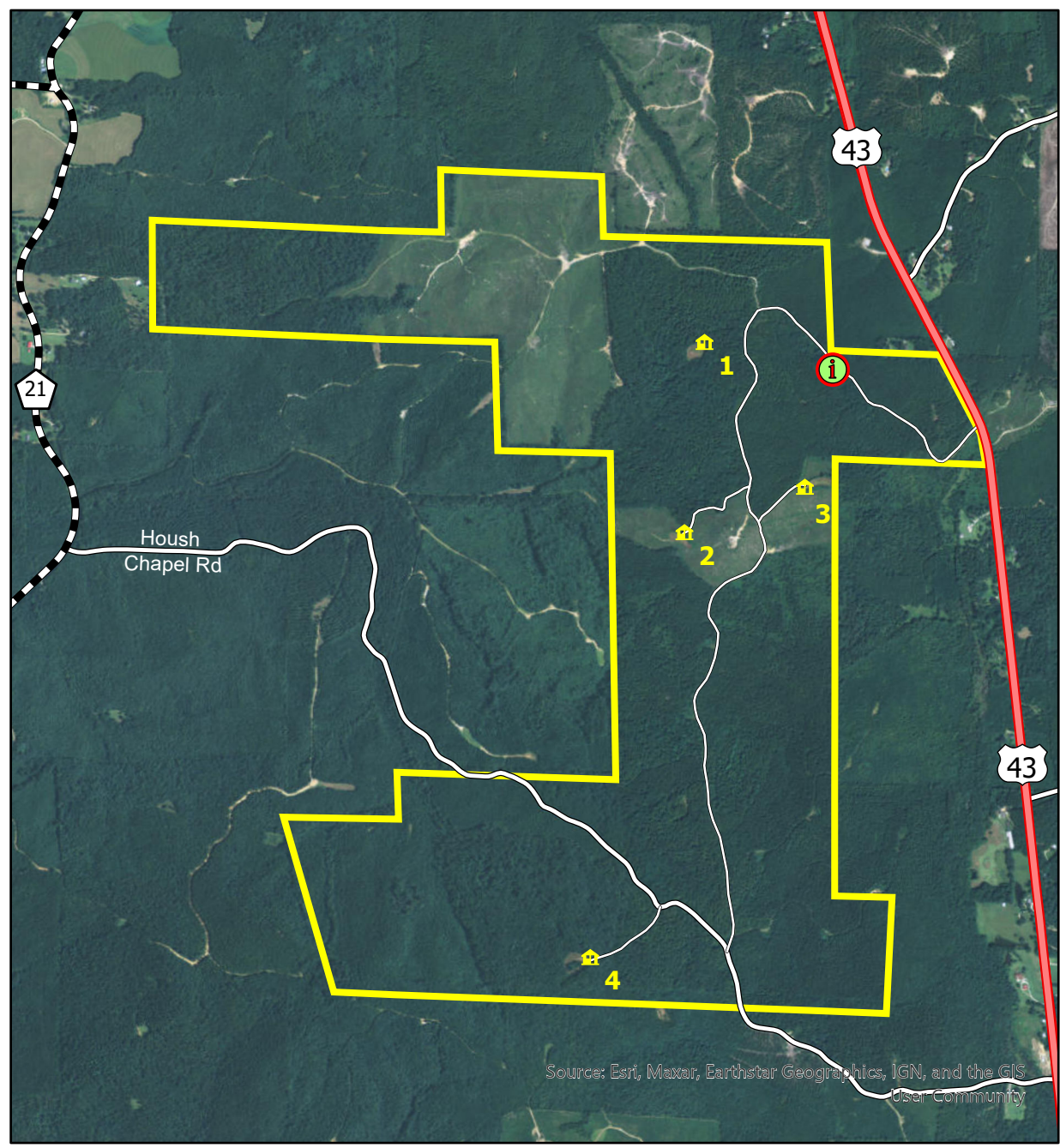





# FAYETTE

## PHYSICALLY DISABLED HUNTING AREA



Source: Esri, Maxar, Earthstar Geographics, IGN, and the GIS User Community

-  Kiosk
-  Shooting House
-  Physically Disabled Hunting Area

**ALL HUNTING MUST BE DONE FROM THE SHOOTING HOUSE.**  
**ALL HUNTERS MUST SIGN IN PRIOR TO HUNTING. AFTER HUNTING, SIGN OUT AND RECORD ALL HARVEST AND WILDLIFE OBSERVATION DATA IN THE LOG LOCATED AT THE KIOSK.**



**FROM WINFIELD:** From intersection of U.S. Highway 78 and U.S. Highway 43, take Highway 43 south 8.4 miles. Entrance to hunting area is on the right. Check in station is approximately 0.3 miles from entrance.

**FROM FAYETTE:** From Intersection of Alabama Highway 18 and U.S. Highway 43, take 43 North 9.4 miles. Entrance to hunting area will be on your left. Check in station is approximately 0.3 miles from entrance.

Season is Tuesdays, Thursdays and Saturdays from November 2 - February 10. Bag limit is one (1) deer per day (either sex) and three (3) deer per season. All antlered bucks harvested must be included as part of the annual statewide three (3) buck limit. Archery only from November 2 to November 16. While shooting houses are not designed for archery hunting, especially with a long bow, this opportunity is being provided for those that desire to use crossbows or other archery equipment.

**RESERVATIONS ARE MADE BY CALLING THE FAYETTE COUNTY COOPERATIVE OFFICE 205-932-8941**

