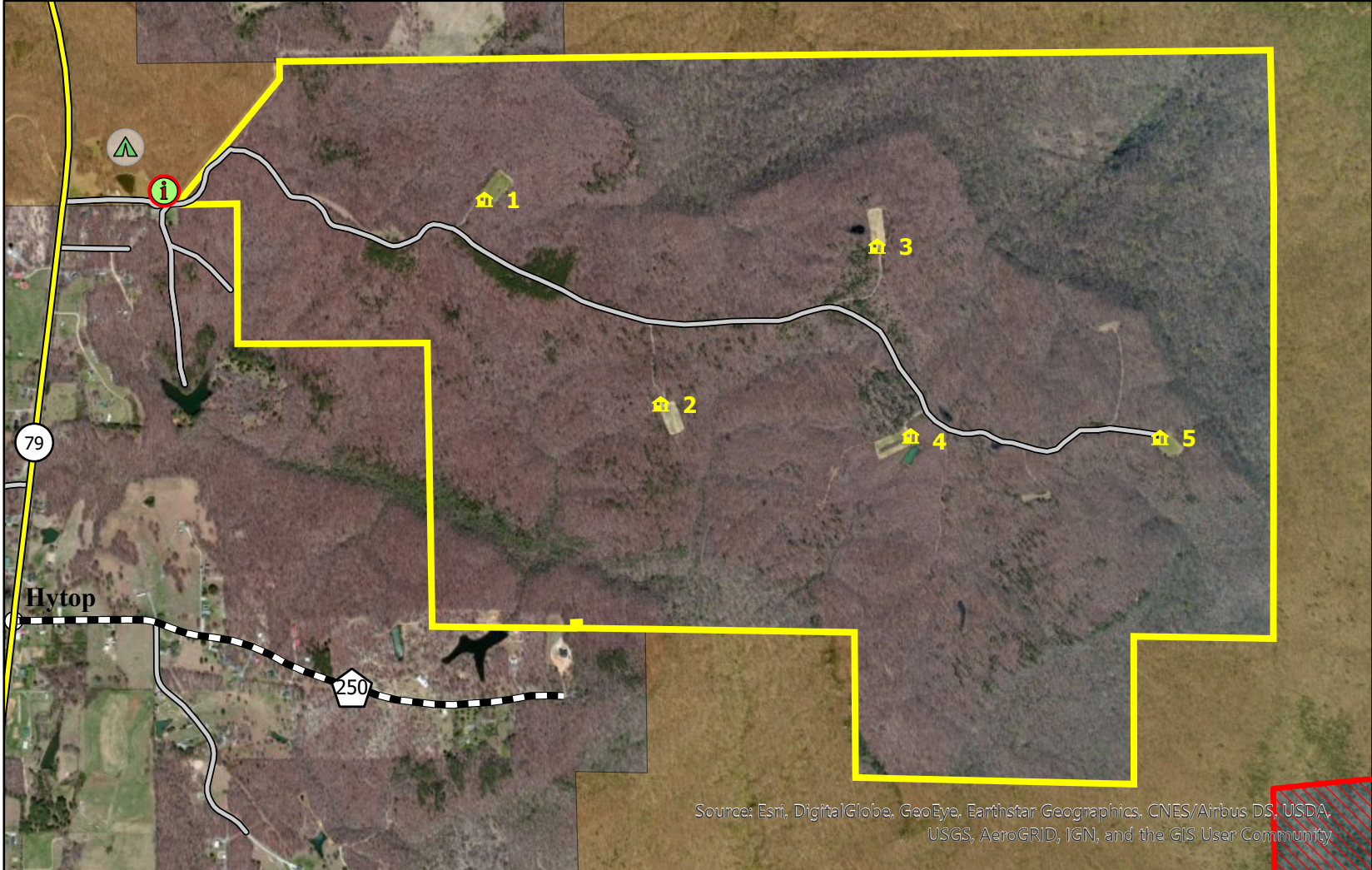


From Intersection of Highway 72 and Highway 79 in Jackson County, take Highway 79 North and go approximately 18 miles. Go through Hytop past the Town Hall/Fire Department and continue approximately 0.5 miles to Letson Point Road. Turn right onto the gravel road for approximately 0.3 miles to the first road on the right.

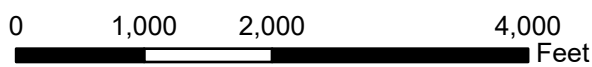
Season is Mondays, Wednesdays, and Saturdays. Gun from November 18 to February 10. Archery only from October 16 to November 11. Archery or Primitive Weapons allowed November 13 & 15. Bag limit is one (1) deer per day (Either sex) and three (3) deer per season. All antlered bucks harvested must be included as part of the annual statewide three (3) buck limit.

While shooting houses are not designed for archery hunting, especially with long bow, this opportunity is being provided for those that desire to use crossbows or other archery equipment. No hunts on dates of youth hunts. Turkey season is Mondays, Wednesdays, Saturdays from April 1 to May 8.



FOREVER WILD LAND TRUST - ALABAMA POWER COMPANY

PHYSICALLY DISABLED HUNTING AREA



FOR RESERVATIONS PLEASE CALL 256-435-5422

ALL HUNTING MUST BE DONE FROM THE SHOOTING HOUSE. ALL HUNTERS MUST SIGN IN PRIOR TO HUNTING. AFTER HUNTING, SIGN OUT AND RECORD ALL HARVEST AND WILDLIFE OBSERVATION DATA IN THE LOG LOCATED AT THE KIOSK.

- Physically Disabled Hunting Area
- Shooting House
- Kiosk
- Camping Area
- Skyline WMA

