

# DOZIER

Source: Esri, Maxar, Earthstar Geographics, IGN, and the GIS User Community

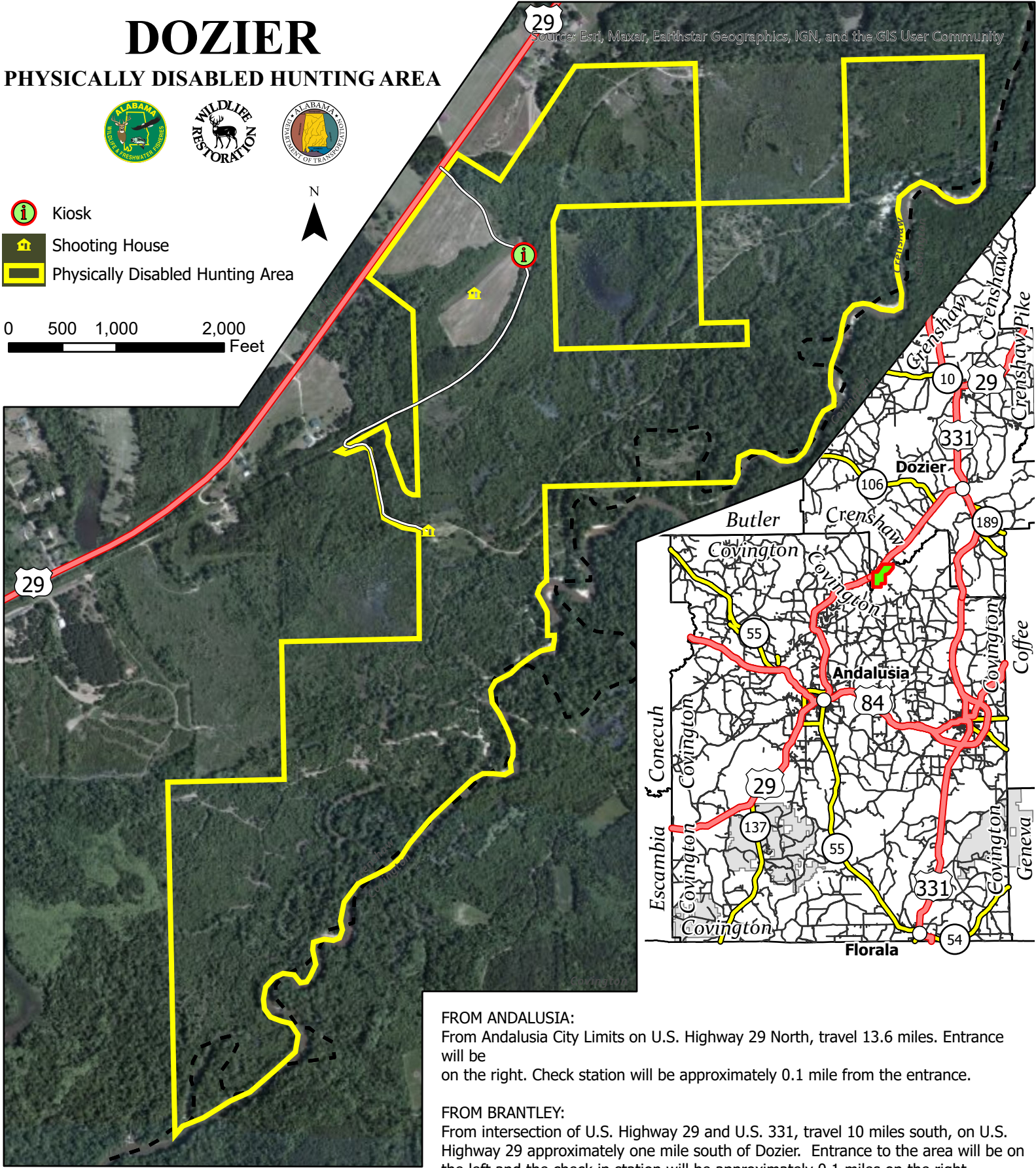
## PHYSICALLY DISABLED HUNTING AREA



- Kiosk
- Shooting House
- Physically Disabled Hunting Area



0 500 1,000 2,000 Feet



**FROM ANDALUSIA:**  
From Andalusia City Limits on U.S. Highway 29 North, travel 13.6 miles. Entrance will be on the right. Check station will be approximately 0.1 mile from the entrance.

**FROM BRANTLEY:**  
From intersection of U.S. Highway 29 and U.S. 331, travel 10 miles south, on U.S. Highway 29 approximately one mile south of Dozier. Entrance to the area will be on the left and the check in station will be approximately 0.1 miles on the right.

**ALL HUNTING MUST BE DONE FROM THE SHOOTING HOUSE. ALL HUNTERS MUST SIGN IN PRIOR TO HUNTING. AFTER HUNTING, SIGN OUT AND RECORD ALL HARVEST AND WILDLIFE OBSERVATION DATA ON THE SIGN IN/OUT SHEET LOCATED AT THE KIOSK.**

**FOR RESERVATIONS CALL: 334-347-1298**

Season is Mondays, Wednesdays and Saturdays from November 1 - February 10. Bag limit is one (1) deer per day (either sex) and **THREE (3) DEER PER SEASON**. All antlered bucks harvested must be included as part of the annual statewide three (3) buck limit. Archery only from November 1 to November 18. While shooting houses are not designed for archery hunting, especially with long bow, this opportunity is provided for those that desire to use crossbows or other archery equipment.