

# CHEROKEE

## PHYSICALLY DISABLED HUNTING AREA



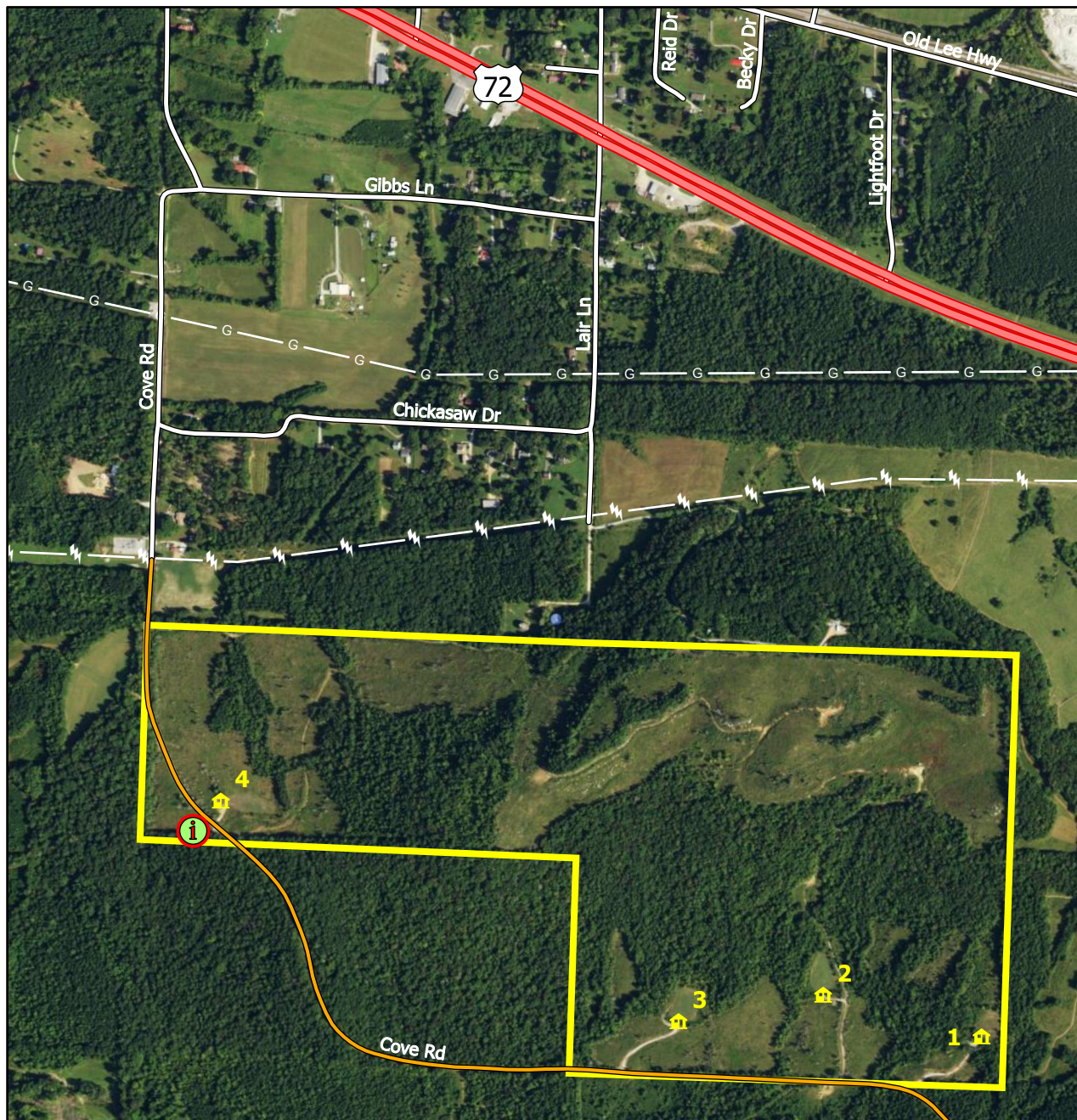
### FROM TUSCUMBIA:

Take Highway 72 West to Cherokee. Once in Cherokee, between the 9 & 8 mile marker, go past Cherokee Auto Parts on your left, take the next left which is Cove Road. Go one block south on Cove Road, then Cove Road bears a hard right at Gibbs Lane. Then follow Cove Road until it becomes gravel/dirt. Continue to follow Cove Road approximately 0.3 mile and the check-in station will be on the right.

### FROM IUKA, MISSISSIPPI:

Take Highway 72 East to Cherokee. About 0.25 mile past the 8 mile marker, take a right onto Cove Road. Go one block south on Cove Road, then Cove Road bears a hard right at Gibbs Lane. Then follow Cove Road until it becomes gravel/dirt. Continue to follow Cove Road approximately 0.3 mile and the check-in station will be on the right.

Season is Mondays, Wednesdays, and Saturdays from November 1 to February 10. Bag limit is one (1) deer per day (either sex). All antlered bucks harvested must be included as part of the annual statewide three (3) buck limit. Archery only from November 1 to November 15. While shooting houses are not designed for archery hunting, especially with long bow, this opportunity is being provided for those that desire to use crossbows or other archery equipment. Turkey Season is Monday, Wednesday and Saturday, April 1-May 8.



Kiosk  
 Shooting House  
 Physically Disabled Hunting Area

0 500 1,000 2,000 Feet

**ALL HUNTING MUST BE DONE FROM THE 4 SHOOTING HOUSES LOCATED ON THE LEFT SIDE OF COVE ROAD. ALL HUNTERS MUST SIGN IN PRIOR TO HUNTING. AFTER HUNTING, SIGN OUT AND RECORD ALL HARVEST AND WILDLIFE OBSERVATION DATA IN THE LOG LOCATED AT THE KIOSK.**

**Reservations will be handled through the Colbert County Cooperative Extension Office in Muscle Shoals at (256) 386-8572 or (256)-386-8571.**

