

MACON STATE FOREST

PHYSICALLY DISABLED HUNTING AREA



0 500 1,000 2,000 Feet



Kiosk



Shooting House



Physically Disabled Hunting Area

FOR RESERVATIONS CALL: 1-800-392-5679

Gun hunting is limited to shotguns with slugs only.

**ALL HUNTING MUST BE DONE FROM THE SHOOTING HOUSE.
ALL HUNTERS MUST SIGN IN PRIOR TO HUNTING. AFTER
HUNTING, SIGN OUT AND RECORD ALL HARVEST AND
WILDLIFE OBSERVATION DATA IN THE LOG LOCATED AT THE
KIOSK.**

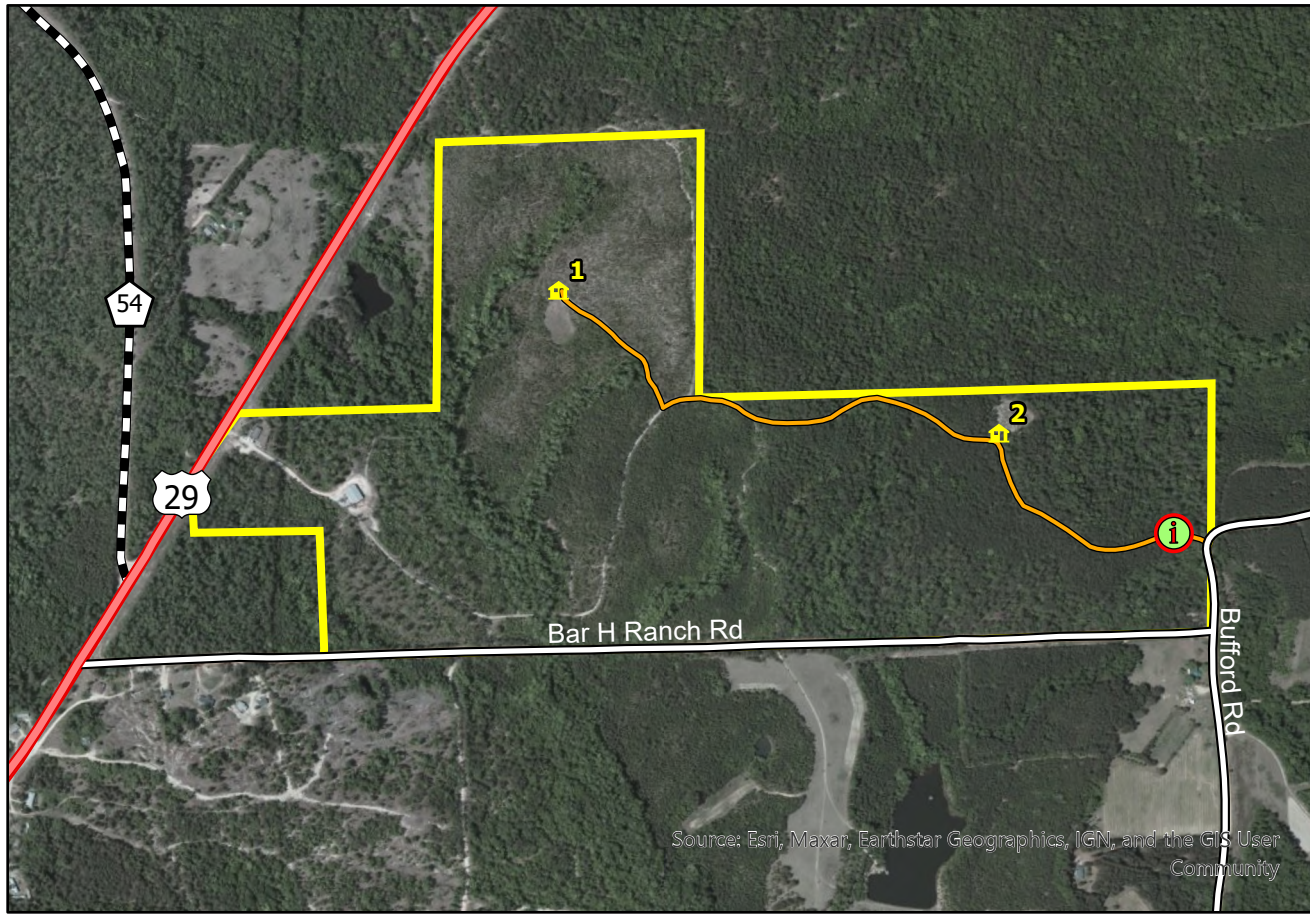
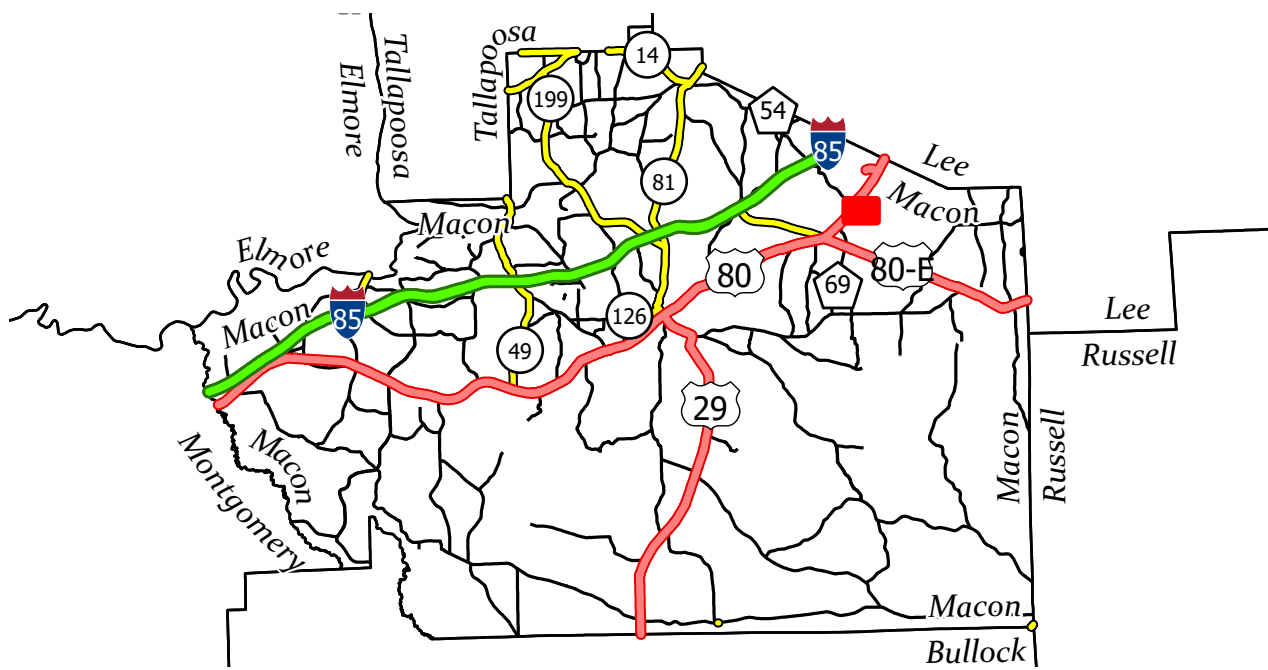
FROM MONTGOMERY:

Take I-85 North and go approximately 40 miles to the Wire Road Exit 42. Take Exit 42, at stop sign turn right onto State Highway 186 East and go approximately 3.5 miles to U.S. 29. Take off ramp. At stop sign turn left onto U.S. 29 North and go 1.5 miles to Bar H. Branch Rd. Turn right onto Bar H. Branch Rd. travel 1.1 mi to Bufford Rd. then turn left onto Bufford for 482ft, the entrance drive will be on the left, the PDHA check-in kiosk will be located by the entrance gate.

FROM AUBURN:

Starting at the intersection of Hwy 29 (South College Street) and Interstate I85 (exit 51), take Hwy 29 South 6 miles. Look for the Macon State Forest – Alabama Forestry Commission office sign. Turn left onto the next dirt road Bar H. Branch Rd. travel 1.1 mi to Bufford Rd. then turn left onto Bufford for 482ft, the entrance drive will be on the left, the PDHA check-in kiosk will be located by the entrance gate.

Season is Mondays, Wednesdays and Saturdays from November 1 to February 10. Bag limit is one (1) deer, either sex per day and three (3) deer per season. All antlered bucks harvested must be included as part of the annual statewide three (3) buck limit. Archery only from November 1 to November 17. While shooting houses are not designed for archery hunting, especially with long bow, this opportunity is being provided for those that desire to use crossbows or other archery equipment.



Source: Esri, Maxar, Earthstar Geographics, IGN, and the GIS User Community