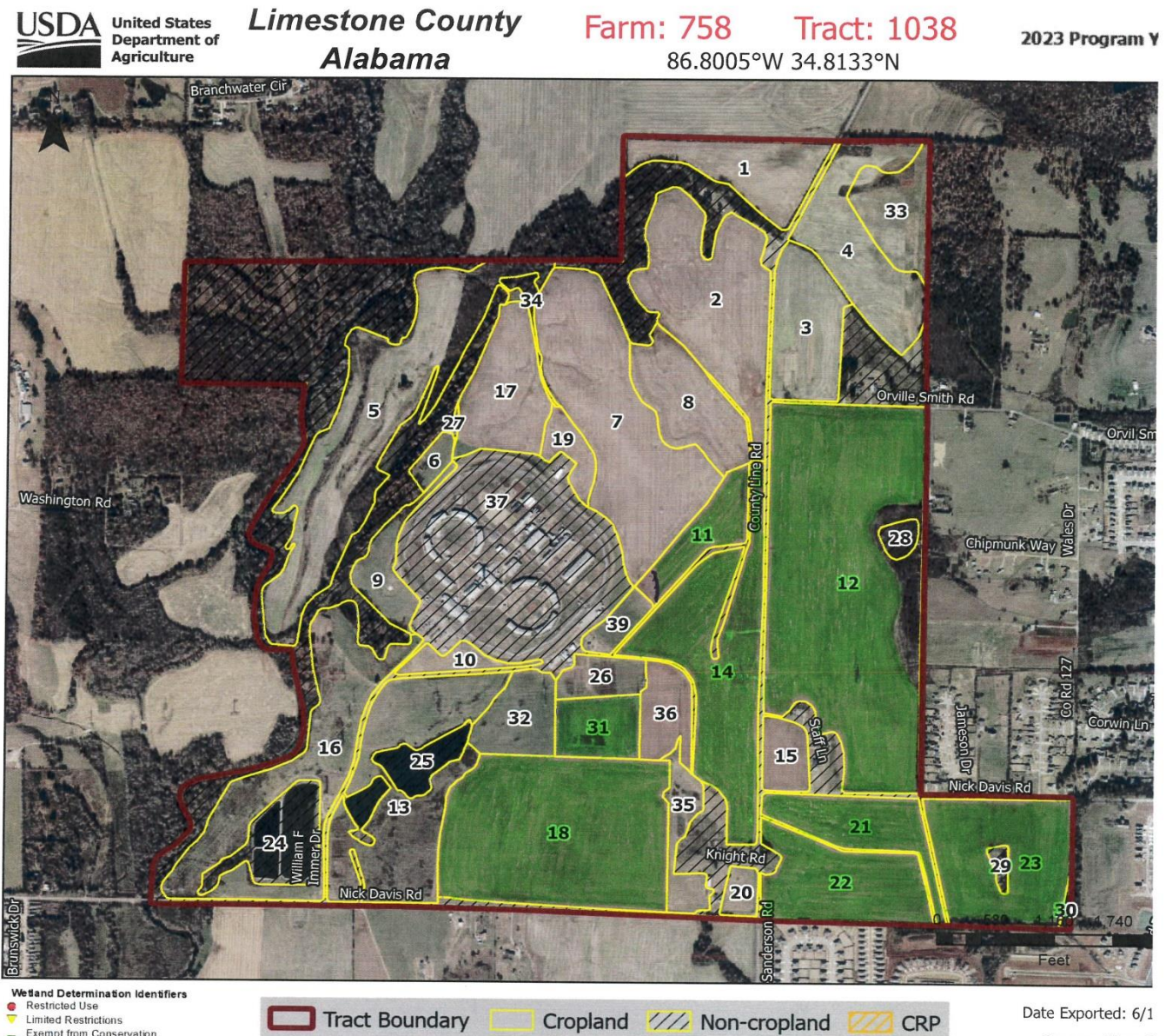


DESCRIPTION OF DEPARTMENT OF CORRECTIONS PROPERTY IN LIMESTONE COUNTY INTENDED FOR AGRICULTURAL LEASE

Parcel lying in T3S, R3W, Limestone County Alabama

Parcel 2 – 350 acres more or less

A tract of land located in Section 1 Township 3 South Range 3 West comprised of Field Nos. 11, 12, 14, 18, 21, 22, 23 and 31 as depicted in Limestone County Alabama USDA Farm Service Agency maps for Farm #758 Tract #1038 and as recorded in the USDA Farm Service Agency Office, 1995 US Highway 72, Athens, Alabama. Fractional acreage totals are used for Field No.'s 11 (1.8 acres deducted) and 12 (9.0 acres deducted) due to facility buffer and wet areas. This parcel contains 350 acres, more or less; and is depicted as the shaded areas in the aerial image attached below.



USDA FSA maps are for FSA Program administration only. This map does not represent a legal survey or reflect actual ownership; rather it depicts the information provided directly from the producer and/or the NAIP imagery. The accepts the data 'as is' and assumes all risks associated with its use. The USDA Farm Service Agency assumes no responsibility for actual or consequential damage incurred as a result of any user's reliance on this data outside FSA. Wetland identifiers do not represent the size, shape, or specific determination of the area. Refer to your original determination (CPA-026 and attached maps) for exact boundaries and determinations or contact NRCS.